

Investor Report: Burlington Mortgages No. 1 Designated Activity Company

From:	AIB
Month Ending:	30/04/2020
Interest Payments Date:	20/05/2020

Investor Contacts			
Mark Whelan	Head of AIB Term Funding & Collateral Management	00353 1 641 7164	mark.a.whelan@aib.ie
Jonathan Lynch	Manager, AIB Collateral Management Unit	00353 1 641 7195	jonathan.d.lynch@aib.ie

PCS ID	00109-STs term
ESMA Reference	5493002SOR6M20VUB380N2020001
Legal Entity Identifier	635400DJAT97IZDCJN35
European Data Warehouse	RMBSIE000145100420208

Deal Participation Information	
Party	Provider
Issuer	Burlington Mortgages No.1 Designated Activity Company
Sellers	EBS d.a.c. & Haven Mortgages Limited
Cash Manager	EBS d.a.c.
Issuer Account Bank	AIB plc
Collection Account Bank	AIB plc
Trustee	BNY Mellon Corporate Trustee Services Limited
Principal Paying Agent & Reference Agent	The Bank of New York Mellon, London Branch
Registrar	The Bank of New York Mellon, Luxembourg Branch
Corporate Services Provider	Intertrust Management Ireland Limited
Back-Up Servicer Facilitator	Intertrust Management Ireland Limited
Subordinated Loan Providers	EBS d.a.c. & Haven Mortgage Limited
Share Trustee	Intertrust Nominees (Ireland) Limited
Arranger	Merrill Lynch International ("BofA Securities")

Details of Notes Issued													
Class of Notes	Reference	Original Moody's Rating	Original DBRS Rating	Current Moody's Rating	Current DBRS Rating	Original Tranche Balance (Euro)	issue Price	Reference Rate	Margin (up to & including First Optional Redemption Date)	Step-Up Margin (after First Optional Redemption Date)	First Optional Redemption Date	Final Maturity Date	
A1 Notes	XS2131184983	Aaa	AAA	Aaa	AAA	€ 1,731,400,000	100%	1 Month EURIBOR	0.40%	n/a	0.80%	Mar-2025	Nov-2058
A2 Notes	XS2131185014	Aaa	AAA	Aaa	AAA	€ 1,731,400,000	100%	0.35% Fixed	n/a	n/a	n/a	Mar-2025	Nov-2058
B Notes	XS2131185105	Aa2	AA(lo)	Aa2	AA(lo)	€ 201,300,000	100%	1 Month EURIBOR	0.95%	1.90%	1.90%	Mar-2025	Nov-2058
C Notes	XS2131185873	A1	A(lo)	A1	A(lo)	€ 110,700,000	100%	1 Month EURIBOR	1.35%	2.35%	2.35%	Mar-2025	Nov-2058
D Notes	XS2131186848	Baa3	BBB(lo)	Baa3	BBB(lo)	€ 110,700,000	100%	1 Month EURIBOR	1.75%	2.75%	2.75%	Mar-2025	Nov-2058
E Notes	XS2131189511	B3	BBB(lo)	B3	BBB(lo)	€ 80,500,000	100%	1 Month EURIBOR	2.75%	3.75%	3.75%	Mar-2025	Nov-2058
Z Notes	XS2131190956	n/a	n/a	n/a	n/a	€ 60,500,000	100%	8.00% Fixed	n/a	n/a	n/a	Mar-2025	Nov-2058
R1A Notes	XS2132421137	n/a	n/a	n/a	n/a	€ 10,000	100%	n/a	n/a	n/a	n/a	Mar-2025	Nov-2058
R1B Notes	XS2132421301	n/a	n/a	n/a	n/a	€ 10,000	100%	n/a	n/a	n/a	n/a	Mar-2025	Nov-2058
R2A Notes	XS2132421483	n/a	n/a	n/a	n/a	€ 10,000	100%	n/a	n/a	n/a	n/a	Mar-2025	Nov-2058
R2B Notes	XS2132421566	n/a	n/a	n/a	n/a	€ 10,000	100%	n/a	n/a	n/a	n/a	Mar-2025	Nov-2058

Deal Information	
Issue Date	16/03/2020
First Distribution Date	20/04/2020
Minimum Denominations (Euro)	100,000
Payments Frequency	Monthly
Interest Calculation	Actual / 360

This Report	
Interest Period Start Date	20/04/2020
Interest Period End Date	20/05/2020
No of days in Interest Period	30
Next Payments Date	22/06/2020

Principal Payments on Notes											
Class of Notes	Reference	Original Balance (Euro)	% of Notes	Opening Balance (Euro)	% of Notes	Amortisation (Euro)	Closing Balance (Euro)	% of Notes	Opening Pool Factor	Closing Pool Factor	
A1 Notes	XS2131184983	1,731,400,000	42.9997%	1,696,880,115	42.5068%	(29,108,412)	1,667,771,703	42.0845%	0.98	0.96	
A2 Notes	XS2131185014	1,731,400,000	42.9997%	1,731,400,000	43.3715%	0	1,731,400,000	43.6901%	1.00	1.00	
B Notes	XS2131185105	201,300,000	4.9993%	201,300,000	5.0426%	0	201,300,000	5.0796%	1.00	1.00	
C Notes	XS2131185873	110,700,000	2.7493%	110,700,000	2.7730%	0	110,700,000	2.7934%	1.00	1.00	
D Notes	XS2131186848	110,700,000	2.7493%	110,700,000	2.7730%	0	110,700,000	2.7934%	1.00	1.00	
E Notes	XS2131189511	80,500,000	1.9992%	80,500,000	2.0165%	0	80,500,000	2.0313%	1.00	1.00	
Z Notes	XS2131190956	60,500,000	1.5025%	60,500,000	1.5155%	0	60,500,000	1.5267%	1.00	1.00	
R1A Notes	XS2132421137	10,000	0.0002%	10,000	0.0003%	0	10,000	0.0003%	1.00	1.00	
R1B Notes	XS2132421301	10,000	0.0002%	10,000	0.0003%	0	10,000	0.0003%	1.00	1.00	
R2A Notes	XS2132421483	10,000	0.0002%	10,000	0.0003%	0	10,000	0.0003%	1.00	1.00	
R2B Notes	XS2132421566	10,000	0.0002%	10,000	0.0003%	0	10,000	0.0003%	1.00	1.00	
Total		4,026,540,000	100%	3,992,020,115	100.0000%	(29,108,412)	3,962,911,703	100.0000%	0.99	0.98	

Interest Payments on Notes							
Class of Notes	Reference	Interest Rate	Number of Days	Interest Due (Euro)	Interest Paid (Euro)	Unpaid Interest (Euro)	Cumulative Unpaid (Euro)
A1 Notes	XS2131184983	0.000%	30	-	-	0	0
A2 Notes	XS2131185014	0.350%	30	504,991.66	504,991.66	0	0
B Notes	XS2131185105	0.512%	30	85,888.00	85,888.00	0	0
C Notes	XS2131185873	0.912%	30	84,132.00	84,132.00	0	0
D Notes	XS2131186848	1.312%	30	121,032.00	121,032.00	0	0
E Notes	XS2131189511	2.312%	30	155,096.66	155,096.66	0	0
Z Notes	XS2131190956	8.000%	30	403,333.33	403,333.33	0	0
R1A Notes	XS2132421137	n/a	n/a	n/a	n/a	n/a	n/a
R1B Notes	XS2132421301	n/a	n/a	n/a	n/a	n/a	n/a
R2A Notes	XS2132421483	n/a	n/a	n/a	n/a	n/a	n/a
R2B Notes	XS2132421566	n/a	n/a	n/a	n/a	n/a	n/a
Total				1,354,473.65	1,354,473.65	-	-

General Credit Structure							
Description	Original Balance (Euro)	Opening Balance (Euro)	Drawings in Month (Euro)	Replenished in Month (Euro)	Closing Balance (Euro)	Balance Required (Euro)	Deficit (Euro)
General Reserve Fund	3,774,000	3,774,000	-	-	3,774,000	3,774,000	-
Liquidity Reserve Fund	25,971,000	25,819,866	(327,728)	-	25,492,138	25,492,138	-
Total	29,745,000	29,593,866	(327,728)	-	29,266,138	29,266,138	-

Revenue Analysis	
	Euro
Revenue Receipts	9,953,316
Interest from Bank Accounts	0
Class A Liquidity Reserve Fund Excess Amount	327,728
Class A Redemption Date, Class A Liquidity Reserve Amount	0
General Reserve Fund Excess Amount	0
Other Net Income, excluding Principal Receipts	62,437
Principal Deficiency Excess Revenue Amounts	0
less:	
Payments to the Sellers	0
Tax Payments, excluding amounts due on the Issuer Profit Ledger	0
Available Revenue Receipts	10,343,481
Allocation of Available Revenue Receipts	
Trustee	0
Amounts due to the Reference Agent, the Registrar, the paying Agent, the Cash Manager, the Back-Up Servicer Facilitator, the Corporate Services Provider, the Issuer Account Bank	0 0 0 (1,458) 0 0 0
any amounts payable by the Issuer to third parties	(33,164)
Servicer (EBS)	(72,437)
Servicer (Haven)	(346,295)
Issuer Profit Fee	(185,975)
Class A Notes Interest	(100)
Class A Liquidity Reserve Fund Required Amount	(504,992)
Class A Principal Deficiency Sub-Ledger	0
Class B Notes Interest	(85,888)
Class B Principal Deficiency Sub-Ledger	0
Class C Notes Interest	(84,132)
Class C Principal Deficiency Sub-Ledger	0
Class D Notes Interest	(121,032)
Class D Principal Deficiency Sub-Ledger	0
Class E Notes Interest	(155,097)
Class E Principal Deficiency Sub-Ledger	0
General Reserve Fund Required Amount	0
Class Z Principal Deficiency Sub-Ledger	(81,563)
Class Z Notes Interest	(403,333)
On or after the First Optional Redemption Date or the Early Redemption Date, amounts to redeem the Rated Notes	0
Subordinated Loan Interest (EBS)	(55,692)
Subordinated Loan Interest (Haven)	(29,892)
Subordinated Loan Principal (EBS)	(5,323,254)
Subordinated Loan Principal (Haven)	(2,857,177)
Amounts to be credited to the Deposit Account to be applied on the next Interest Payment Date as Available Revenue Receipts	0
Class R1A Payment	0
Class R1B Payment	0
Class R1 Principal Payment	0
Class R2A Payment	0
Class R2B Payment	0
Reconciliation	(0)

Principal Deficiency Ledger						
Class of Notes	Reference	Opening Balance (Euro)	Increase in Losses (Euro)	Decrease in Losses (Euro)	Allocation of Revenue Receipts	Closing Balance (Euro)
A1 Notes	XS2131184983	0	0	0	0	0
A2 Notes	XS2131185014	0	0	0	0	0
B Notes	XS2131185105	0	0	0	0	0
C Notes	XS2131185873	0	0	0	0	0
D Notes	XS2131186848	0	0	0	0	0
E Notes	XS2131189511	0	0	0	0	0
Z Notes	XS2131190956	-	81,563	-	81,563	-

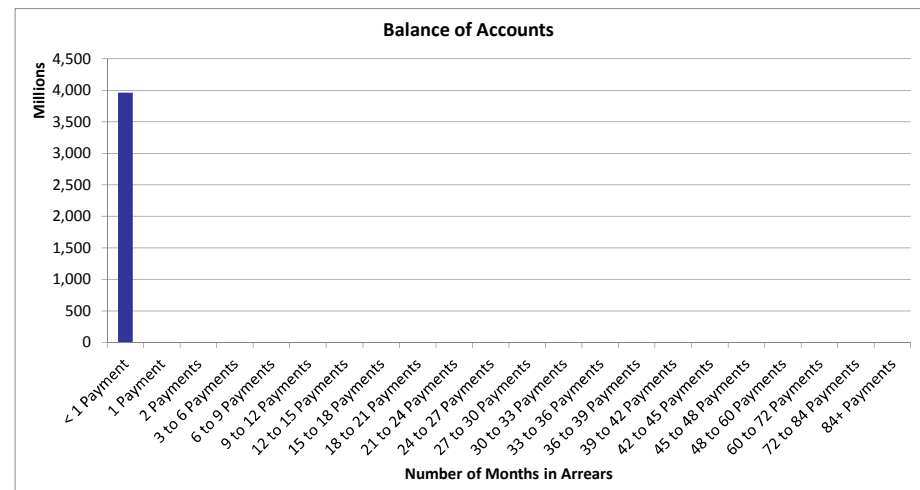
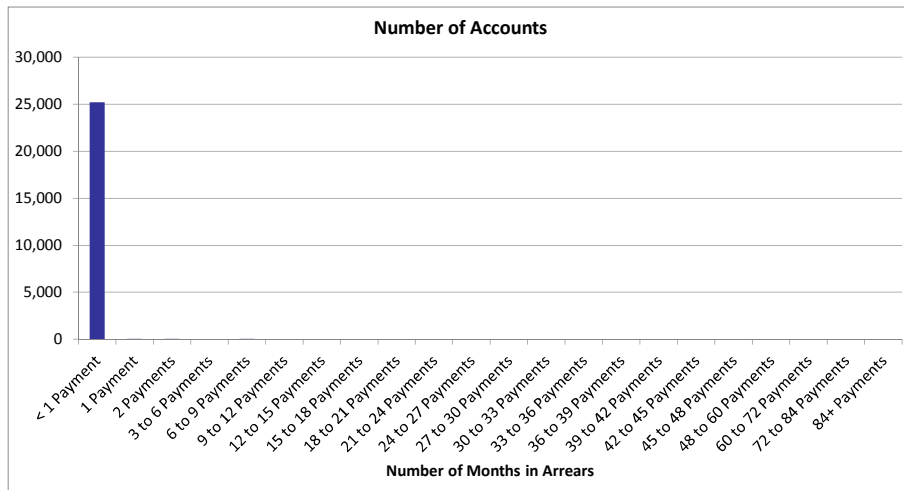
Principal Deficiency Ledger					
Class of Notes	Reference	Cumulative Increase in Losses (Euro)	Cumulative Decrease in Losses (Euro)	Cumulative Allocation of Revenue Receipts	
A1 Notes	XS2131184983	0	0	0	
A2 Notes	XS2131185014	0	0	0	
B Notes	XS2131185105	0	0	0	
C Notes	XS2131185873	0	0	0	
D Notes	XS2131186848	0	0	0	
E Notes	XS2131189511	0	0	0	
Z Notes	XS2131190956	81,563	-	81,563	

Principal Analysis		Euro
Principal Receipts		29,026,849
Proceeds of issue of the Class R1 Notes and the Class R2 Note		0
Any credit to the Principal Deficiency Ledgers		81,563
Any other Available Principal receipts		0
The excess of the proceeds of the Collateralised Notes over the Consideration		0
Optional Purchase Price upon sale of the Portfolio further to exercise of the Call Option		0
less:		
Available Principal Receipts applied as Principal Deficiency Excess Revenue Amounts		0
Available Principal		29,108,412
Allocation of Available Principle		
Principal Addition Amounts to be applied to meet any Senior Expenses Deficit;		0
Pro rata and pari passu to the principal amounts due on the Class A1 Notes;	(29,108,412)	0
Pro rata and pari passu to the principal amounts due on the Class A2 Notes;		0
Pro rata and pari passu to the principal amounts due on the Class B Notes;		0
Pro rata and pari passu to the principal amounts due on the Class C Notes;		0
Pro rata and pari passu to the principal amounts due on the Class D Notes;		0
Pro rata and pari passu to the principal amounts due on the Class E Notes;		0
Pro rata and pari passu to the principal amounts due on the Class Z Notes;		0
Principal amount due on the Class R2 Notes		0
All remaining amounts to be applied as Available Revenue Receipts		0
Reconciliation		0

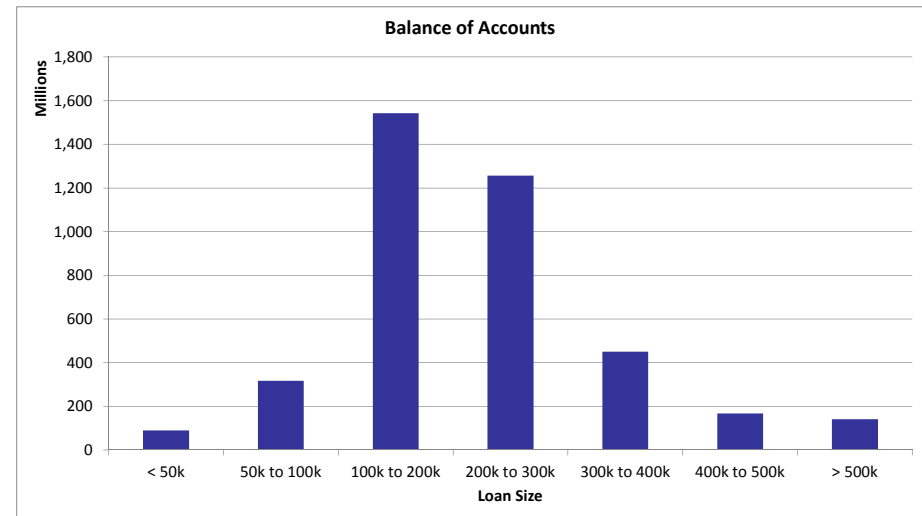
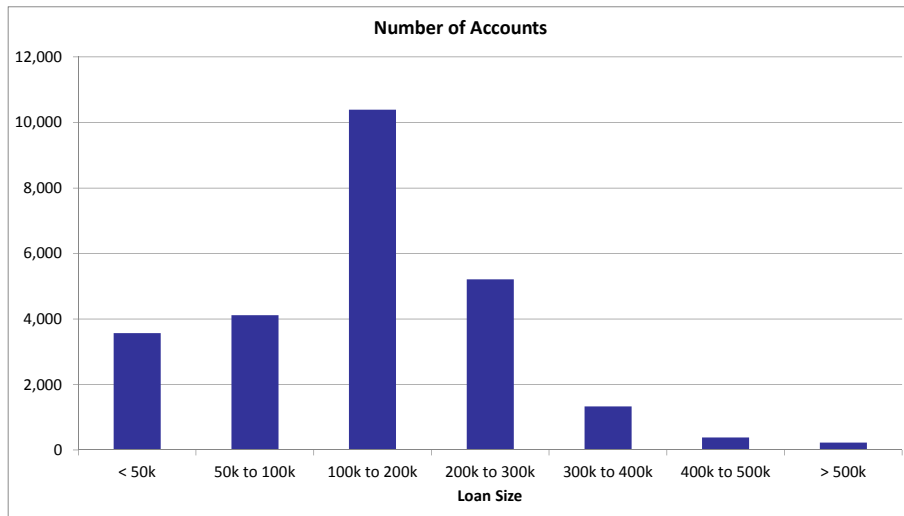
Mortgage Portfolio Analysis		
	This Period (Euro)	Cumulative (Euro)
Opening Mortgage Principle Balance	3,992,026,087	4,026,483,467
Scheduled Principal Payments and Early Redemptions	29,026,849	63,490,201
Non-cash movements	(1,180,174)	(1,186,146)
Mortgages Repurchased by Sellers	0	0
Closing Mortgage Principal Balance	3,964,179,412	3,964,179,412

Stratification Tables

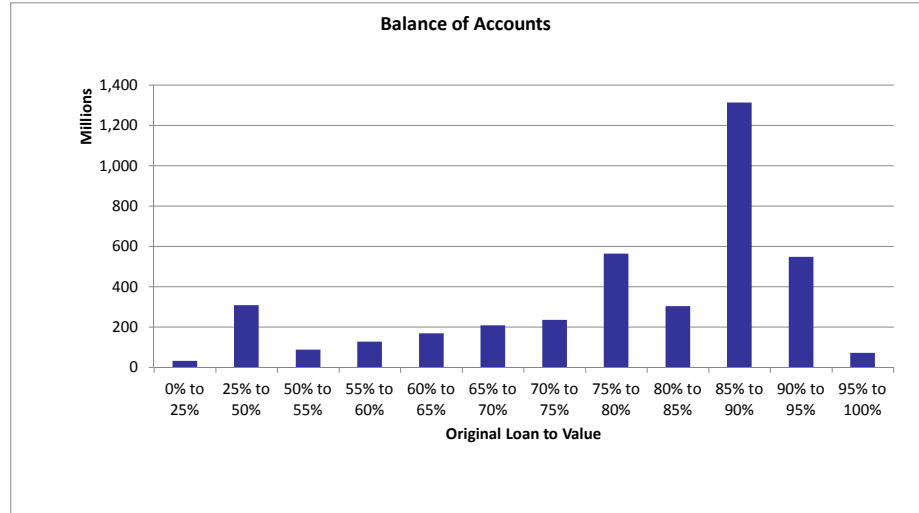
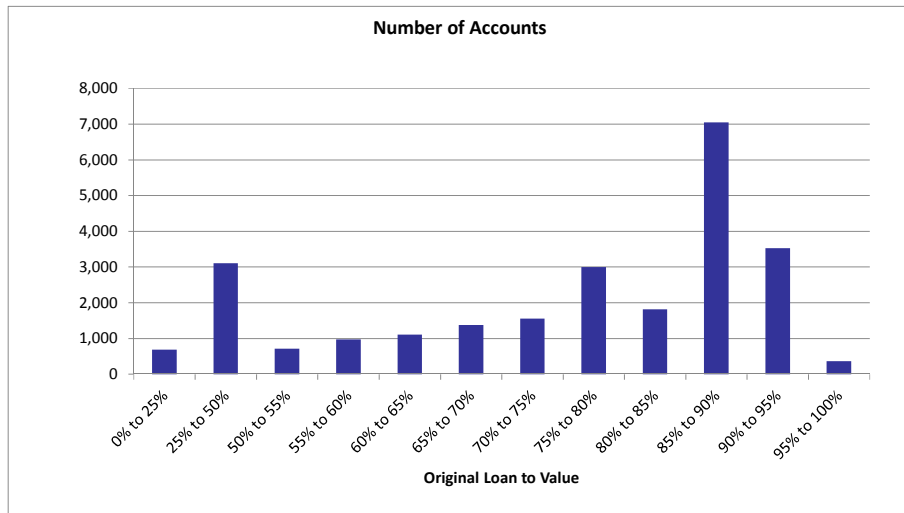
Number of Repayments in Arrears				
Number of Payments Missed	Number of Accounts	% Number of Accounts	Outstanding Balance	% of Total Outstanding
< 1 Payment	25,209	99.94%	3,961,789,802	99.94%
1 Payment	12	0.05%	1,990,943	0.05%
2 Payments	2	0.01%	235,541	0.01%
3 to 6 Payments	0	0.00%	0	0.00%
6 to 9 Payments	1	0.00%	163,126	0.00%
9 to 12 Payments	0	0.00%	0	0.00%
12 to 15 Payments	0	0.00%	0	0.00%
15 to 18 Payments	0	0.00%	0	0.00%
18 to 21 Payments	0	0.00%	0	0.00%
21 to 24 Payments	0	0.00%	0	0.00%
24 to 27 Payments	0	0.00%	0	0.00%
27 to 30 Payments	0	0.00%	0	0.00%
30 to 33 Payments	0	0.00%	0	0.00%
33 to 36 Payments	0	0.00%	0	0.00%
36 to 39 Payments	0	0.00%	0	0.00%
39 to 42 Payments	0	0.00%	0	0.00%
42 to 45 Payments	0	0.00%	0	0.00%
45 to 48 Payments	0	0.00%	0	0.00%
48 to 60 Payments	0	0.00%	0	0.00%
60 to 72 Payments	0	0.00%	0	0.00%
72 to 84 Payments	0	0.00%	0	0.00%
84+ Payments	0	0.00%	0	0.00%
Total	25,224	100.00%	3,964,179,412	100.00%



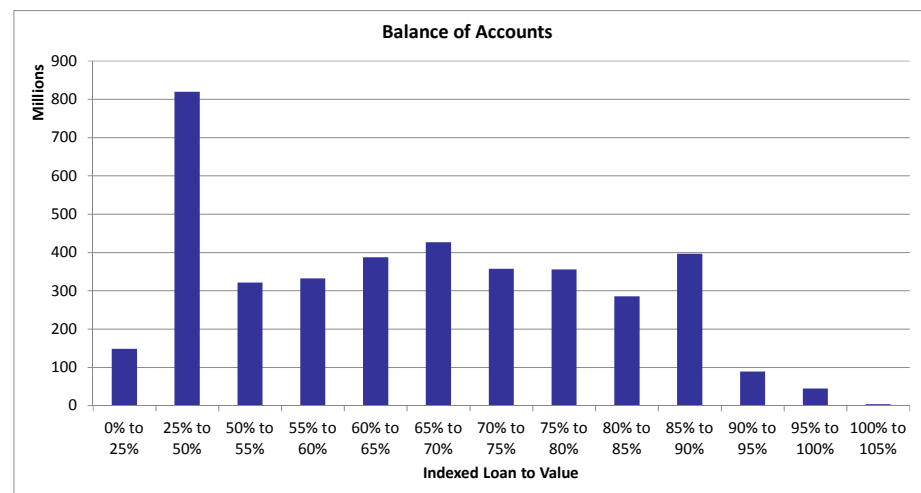
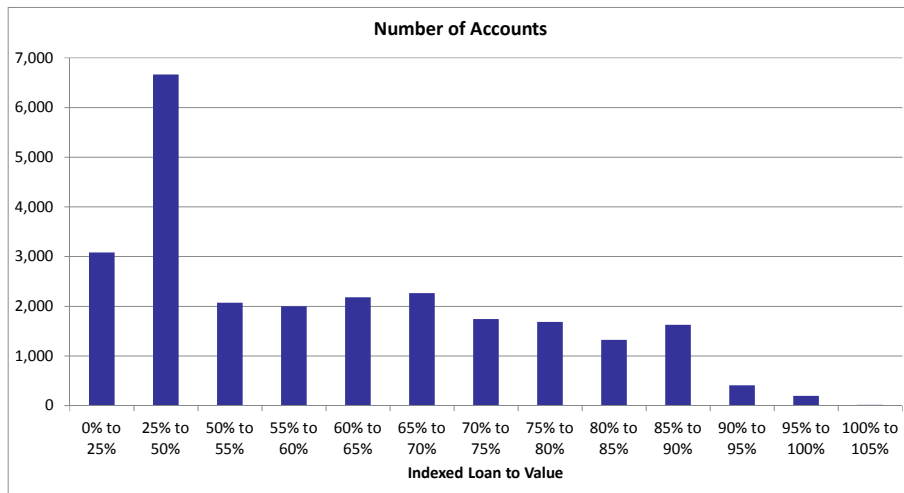
Loan Size				
Loan Size	Number of Accounts	% Number of Accounts	Outstanding Balance	% of Total Outstanding
< 50k	3,574	14.17%	89,534,984	2.26%
50k to 100k	4,114	16.31%	316,872,760	7.99%
100k to 200k	10,389	41.19%	1,541,802,856	38.89%
200k to 300k	5,212	20.66%	1,256,257,211	31.69%
300k to 400k	1,330	5.27%	450,184,179	11.36%
400k to 500k	381	1.51%	167,727,557	4.23%
> 500k	224	0.89%	141,799,866	3.58%
Total	25,224	100.00%	3,964,179,412	100.00%
Weighted Average Loan Size			157,159.03	



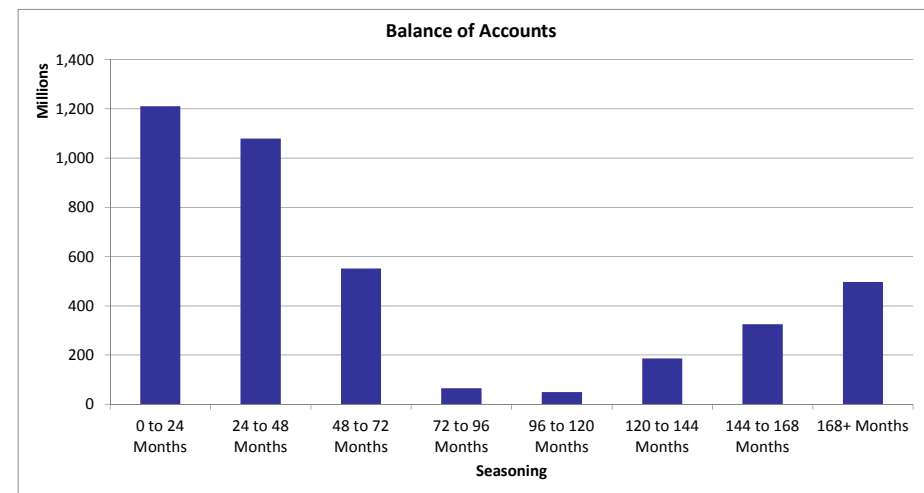
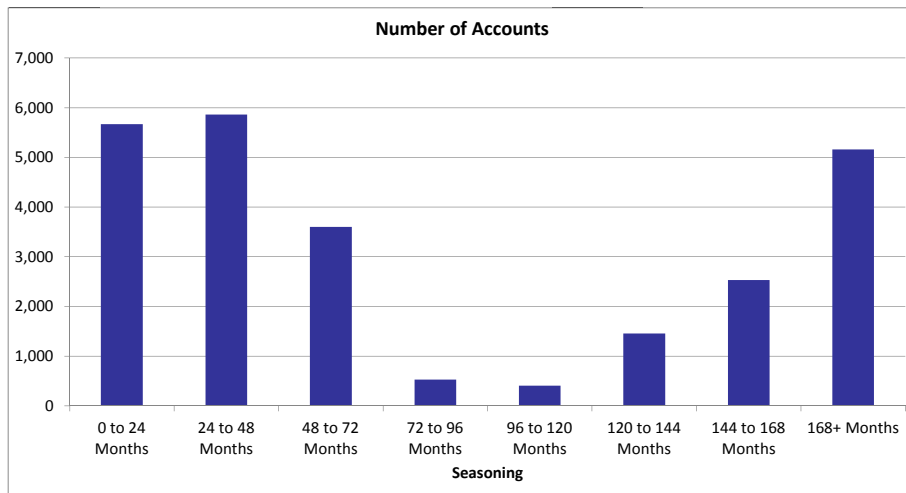
Original LTV				
Original LTV	Number of Accounts	% Number of Accounts	Outstanding Balance	% of Total Outstanding
0% to 25%	679	2.69%	31,874,622	0.80%
25% to 50%	3,103	12.30%	308,114,259	7.77%
50% to 55%	711	2.82%	87,360,357	2.20%
55% to 60%	974	3.86%	127,361,766	3.21%
60% to 65%	1,103	4.37%	168,042,363	4.24%
65% to 70%	1,370	5.43%	207,730,725	5.24%
70% to 75%	1,548	6.14%	234,927,386	5.93%
75% to 80%	2,992	11.86%	563,401,154	14.21%
80% to 85%	1,816	7.20%	303,662,291	7.66%
85% to 90%	7,045	27.93%	1,313,359,952	33.13%
90% to 95%	3,522	13.96%	547,309,719	13.81%
95% to 100%	361	1.43%	71,034,820	1.79%
Total	25,224	100.00%	3,964,179,412	100.00%
Weighted Average Original LTV			78.49%	



Indexed LTV				
Indexed LTV	Number of Accounts	% Number of Accounts	Outstanding Balance	% of Total Outstanding
0% to 25%	3,081	12.21%	148,048,684	3.73%
25% to 50%	6,658	26.40%	818,920,902	20.66%
50% to 55%	2,069	8.20%	320,975,502	8.10%
55% to 60%	1,995	7.91%	331,580,632	8.36%
60% to 65%	2,179	8.64%	387,305,029	9.77%
65% to 70%	2,263	8.97%	426,101,131	10.75%
70% to 75%	1,743	6.91%	357,115,872	9.01%
75% to 80%	1,680	6.66%	355,278,755	8.96%
80% to 85%	1,321	5.24%	285,409,663	7.20%
85% to 90%	1,621	6.43%	396,425,724	10.00%
90% to 95%	404	1.60%	89,080,817	2.25%
95% to 100%	195	0.77%	44,655,864	1.13%
100% to 105%	15	0.06%	3,280,838	0.08%
Total	25,224	100.00%	3,964,179,412	100.00%
Weighted Average Indexed LTV			62.83%	

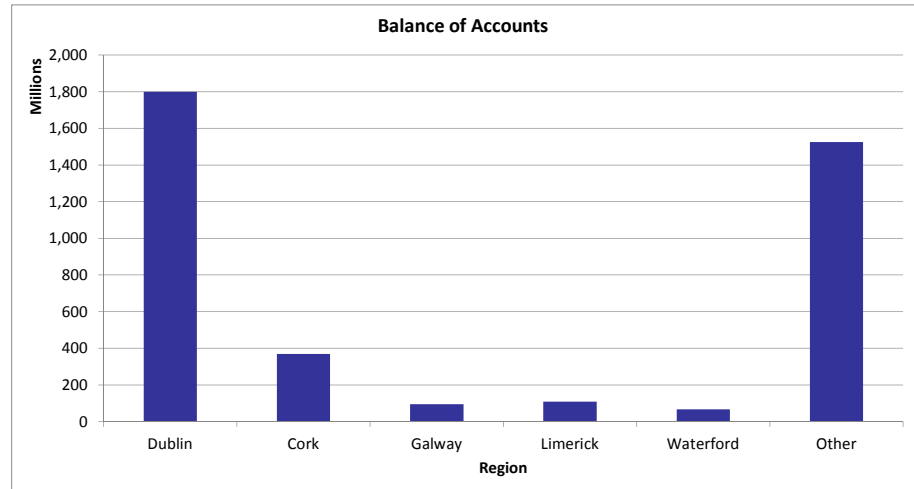
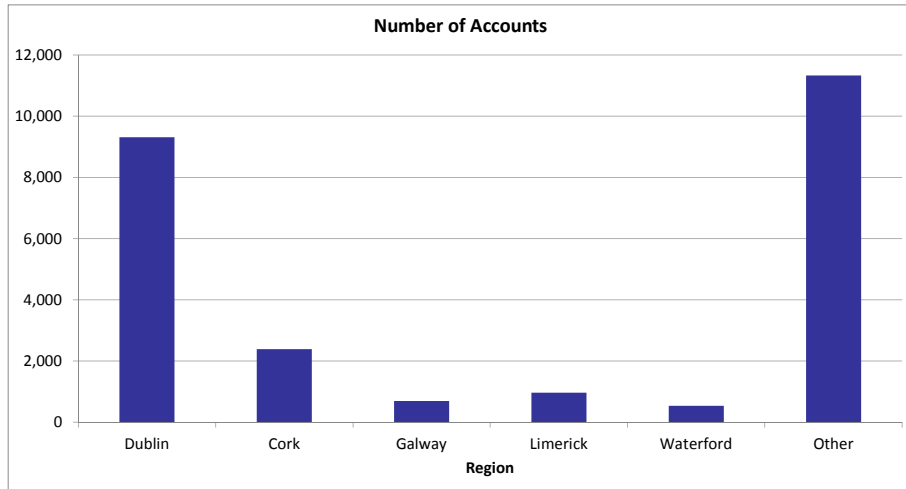


Seasoning				
Seasoning	Number of Accounts	% Number of Accounts	Outstanding Balance	% of Total Outstanding
0 to 24 Months	5,671	22.48%	1,210,776,574	30.54%
24 to 48 Months	5,862	23.24%	1,079,670,480	27.24%
48 to 72 Months	3,601	14.28%	551,102,280	13.90%
72 to 96 Months	530	2.10%	64,841,091	1.64%
96 to 120 Months	407	1.61%	49,015,257	1.24%
120 to 144 Months	1,459	5.78%	186,700,979	4.71%
144 to 168 Months	2,535	10.05%	325,782,669	8.22%
168+ Months	5,159	20.45%	496,290,081	12.52%
Total	25,224	100.00%	3,964,179,412	100.00%
Weighted Average Seasoning			67.17	

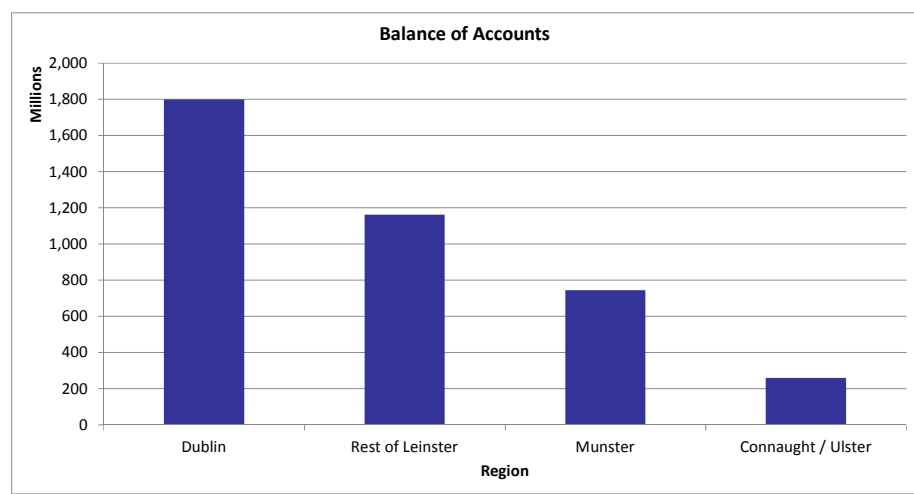
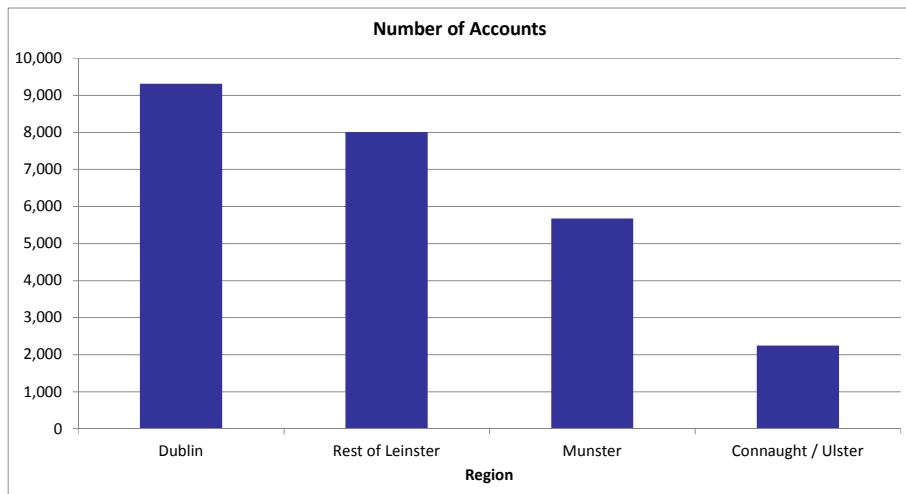


<i>Property Area (County)</i>				
County	Number of Accounts	% Number of Accounts	Outstanding Balance	% of Total Outstanding
CARLOW	320	1.27%	37,049,957	0.93%
CAVAN	195	0.77%	22,869,474	0.58%
CLARE	623	2.47%	67,494,379	1.70%
CORK	2,387	9.46%	369,404,402	9.32%
DONEGAL	469	1.86%	42,817,630	1.08%
DUBLIN	9,311	36.91%	1,799,059,852	45.38%
GALWAY	695	2.76%	95,228,556	2.40%
KERRY	580	2.30%	65,175,653	1.64%
KILDARE	1,835	7.27%	300,315,231	7.58%
KILKENNY	331	1.31%	41,068,665	1.04%
LAOIS	392	1.55%	49,613,503	1.25%
LEITRIM	76	0.30%	7,573,395	0.19%
LIMERICK	965	3.83%	109,456,983	2.76%
LONGFORD	88	0.35%	8,382,523	0.21%
LOUTH	1,029	4.08%	132,001,500	3.33%
MAYO	304	1.21%	32,191,663	0.81%
MEATH	1,870	7.41%	282,388,630	7.12%
MONAGHAN	113	0.45%	13,980,716	0.35%
OFFALY	230	0.91%	26,816,925	0.68%
ROSCOMMON	135	0.54%	15,638,204	0.39%
SLIGO	254	1.01%	28,020,284	0.71%
TIPPERARY	577	2.29%	66,497,480	1.68%
WATERFORD	537	2.13%	66,397,817	1.67%
WESTMEATH	370	1.47%	45,002,818	1.14%
WEXFORD	506	2.01%	64,442,697	1.63%
WICKLOW	1,032	4.09%	175,290,477	4.42%
Total	25,224	100.00%	3,964,179,412	100.00%

<i>Property Area (County)</i>				
Major County	Number of Accounts	% Number of Accounts	Outstanding Balance	% of Total Outstanding
Dublin	9,311	36.91%	1,799,059,852	45.38%
Cork	2,387	9.46%	369,404,402	9.32%
Galway	695	2.76%	95,228,556	2.40%
Limerick	965	3.83%	109,456,983	2.76%
Waterford	537	2.13%	66,397,817	1.67%
Other	11,329	44.91%	1,524,631,802	38.46%
Total	25,224	100.00%	3,964,179,412	100.00%

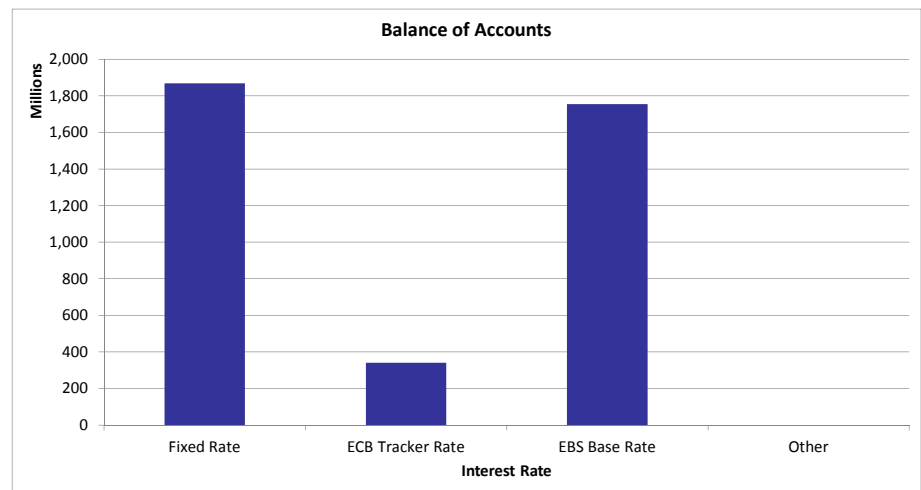
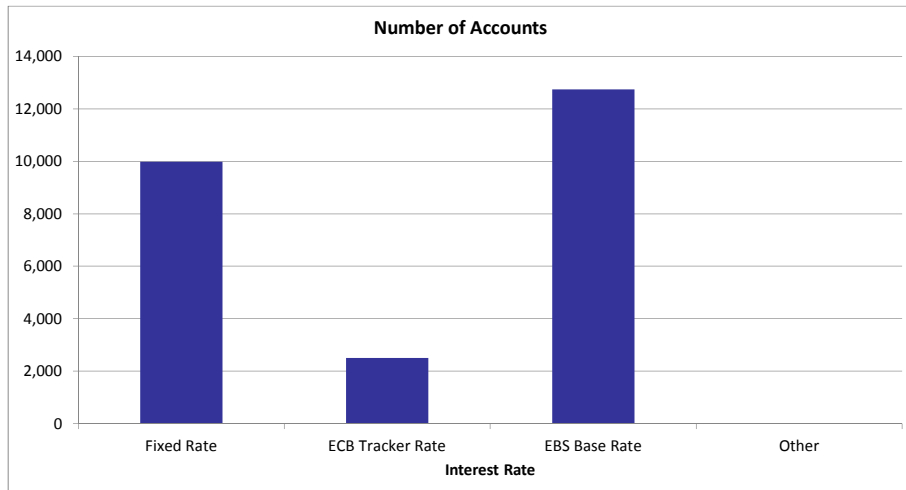


Property Area (Region)				
Region	Number of Accounts	% Number of Accounts	Outstanding Balance	% of Total Outstanding
Dublin	9,311	36.91%	1,799,059,852	45.38%
Rest of Leinster	8,003	31.73%	1,162,372,924	29.32%
Munster	5,669	22.47%	744,426,714	18.78%
Connaught / Ulster	2,241	8.88%	258,319,921	6.52%
Total	25,224	100.00%	3,964,179,412	100.00%

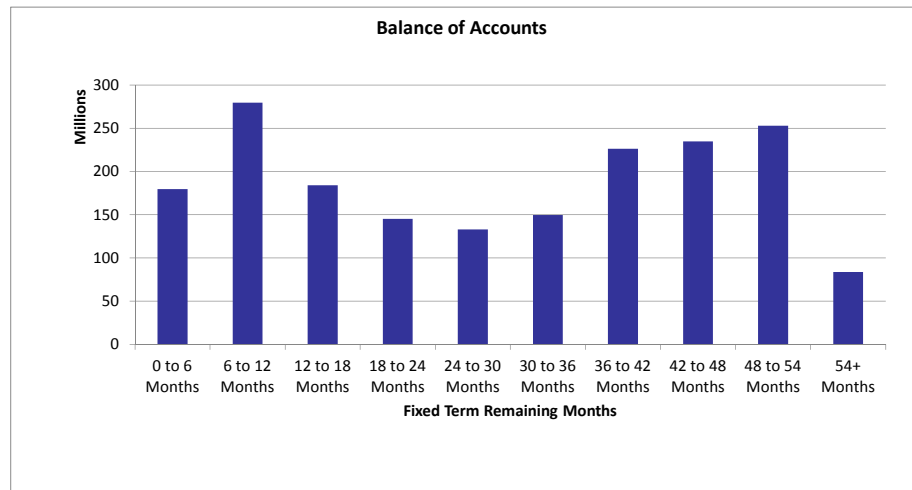
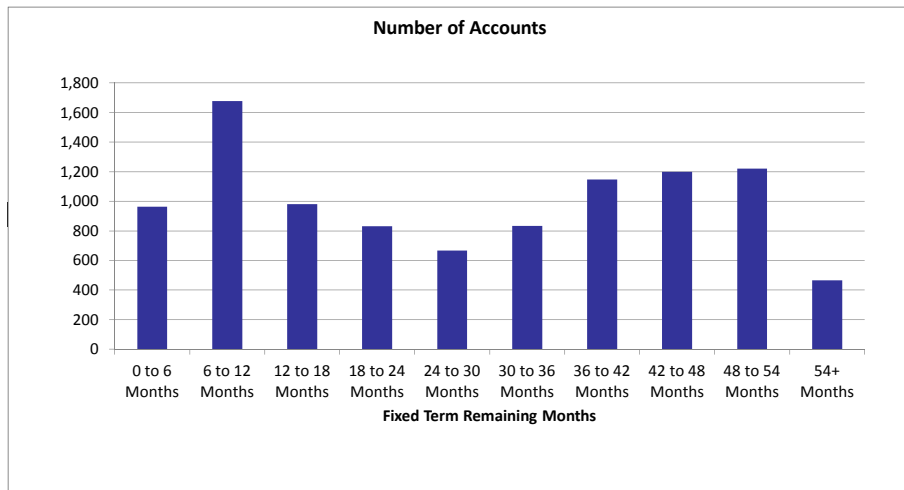


<i>Interest Rate</i>				
Interest Rate Type	Number of Accounts	% Number of Accounts	Outstanding Balance	% of Total Outstanding
Fixed Rate	9,988	39.60%	1,869,089,071	47.15%
ECB Tracker Rate	2,496	9.90%	339,878,481	8.57%
Variable Rate	12,740	50.51%	1,755,211,860	44.28%
Other	0	0.00%	0	0.00%
Total	25,224	100.00%	3,964,179,412	100.00%

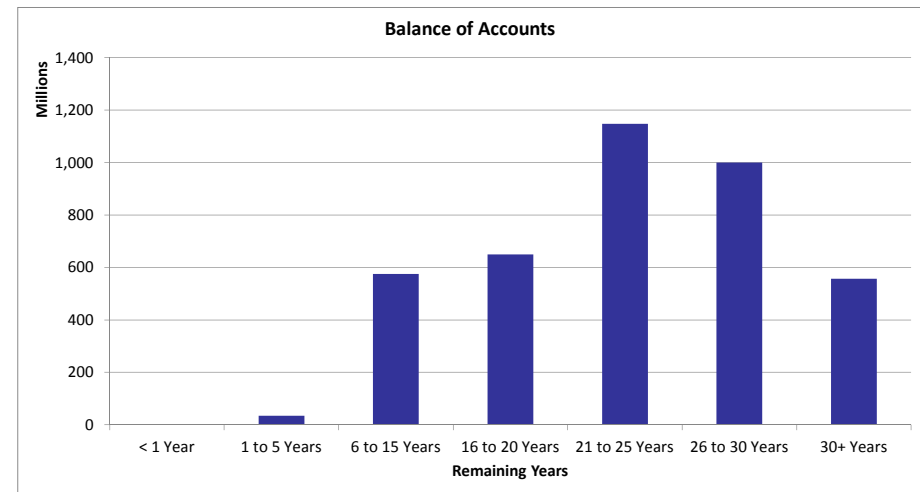
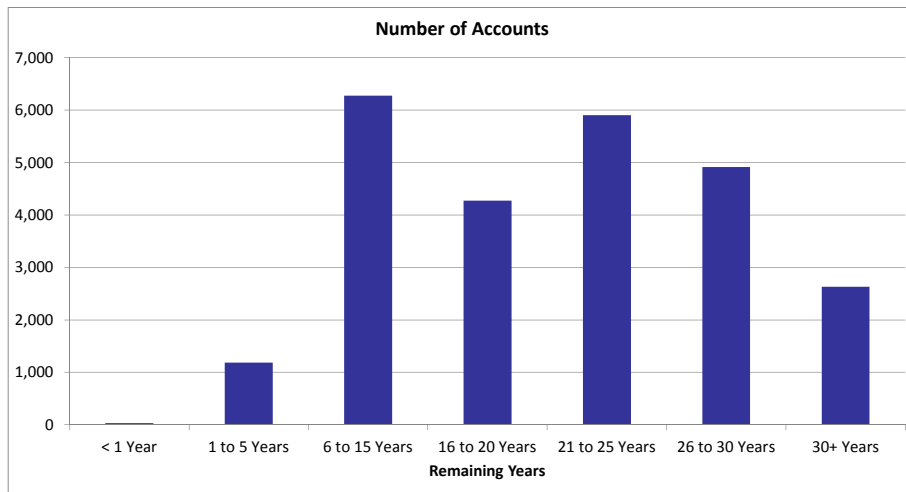
<i>Interest Rate</i>		
Interest Rate Type	Number of Accounts	Avg Interest Rate %
Fixed Rate	9,988	3.05
ECB Tracker Rate	2,496	1.19
Variable Rate	12,740	3.38
Other	0	0.00



Fixed Term Remaining Months				
Fixed Term Remaining Months	Number of Accounts	% Number of Accounts	Outstanding Balance	% of Total Outstanding
0 to 6 Months	963	9.64%	179,559,493	9.61%
6 to 12 Months	1,678	16.80%	279,563,235	14.96%
12 to 18 Months	980	9.81%	184,130,110	9.85%
18 to 24 Months	832	8.33%	145,050,911	7.76%
24 to 30 Months	668	6.69%	133,156,550	7.12%
30 to 36 Months	833	8.34%	149,572,658	8.00%
36 to 42 Months	1,148	11.49%	226,290,332	12.11%
42 to 48 Months	1,199	12.00%	234,734,858	12.56%
48 to 54 Months	1,221	12.22%	253,196,300	13.55%
54+ Months	466	4.67%	83,834,623	4.49%
Total	9,988	100.00%	1,869,089,071	100.00%
Weighted Fixed Term Remaining Months			29.73	

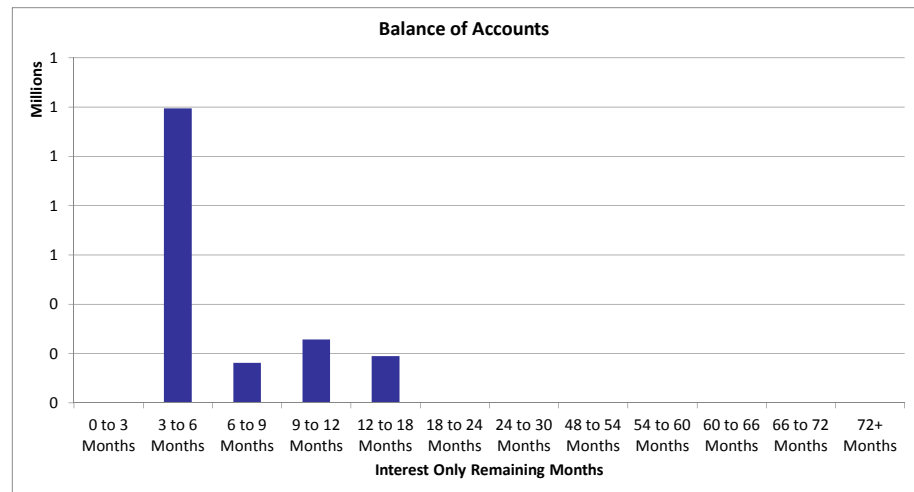
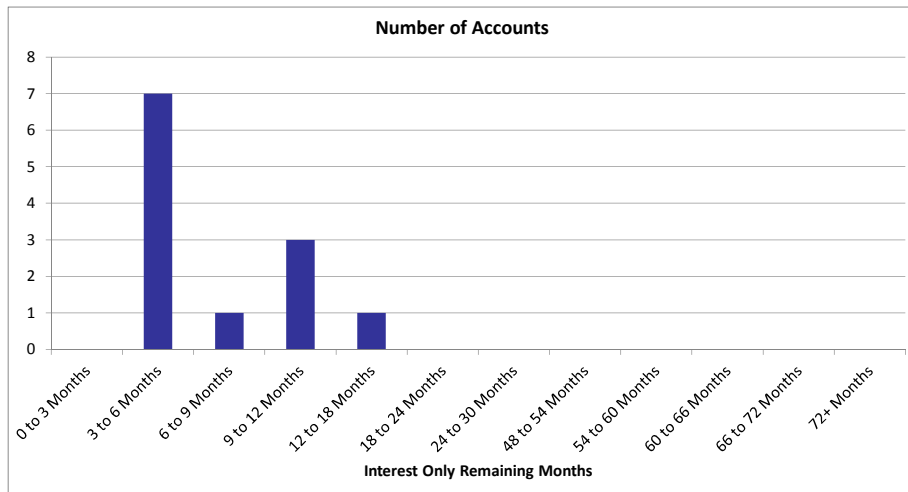


Remaining Years				
Remaining Years	Number of Accounts	% Number of Accounts	Outstanding Balance	% of Total Outstanding
< 1 Year	34	0.13%	305,569	0.01%
1 to 5 Years	1,188	4.71%	34,236,754	0.86%
6 to 15 Years	6,278	24.89%	575,344,019	14.51%
16 to 20 Years	4,273	16.94%	650,280,469	16.40%
21 to 25 Years	5,901	23.39%	1,148,109,973	28.96%
26 to 30 Years	4,916	19.49%	999,544,478	25.21%
30+ Years	2,634	10.44%	556,358,150	14.03%
Total	25,224	100.00%	3,964,179,412	100.00%
Weighted Average Remaining Years			22.43	



Repayments Status				
Principal Repayments Status	Number of Accounts	% Number of Accounts	Outstanding Balance	% of Total Outstanding
Principal and Interest	23,144	91.75%	3,613,621,285	91.16%
Interest Only (Standard)	13	0.05%	2,062,072	0.05%
Interest Only (COVID - 19)	245	0.97%	36,335,655	0.92%
Moratorium (COVID - 19)	1,822	7.22%	312,160,400	7.87%
Total	25,224	100.00%	3,964,179,412	100.00%

Interest Only (Standard) Remaining Term				
Interest Only (Standard) Remaining Term	Number of Accounts	% Number of Accounts	Outstanding Balance	% of Total Outstanding
0 to 3 Months	0	0.00%	0	0.00%
3 to 6 Months	7	58.33%	1,195,093	66.21%
6 to 9 Months	1	8.33%	162,537	9.00%
9 to 12 Months	3	25.00%	257,450	14.26%
12 to 18 Months	1	8.33%	189,929	10.52%
18 to 24 Months	0	0.00%	0	0.00%
24 to 30 Months	0	0.00%	0	0.00%
48 to 54 Months	0	0.00%	0	0.00%
54 to 60 Months	0	0.00%	0	0.00%
60 to 66 Months	0	0.00%	0	0.00%
66 to 72 Months	0	0.00%	0	0.00%
72+ Months	0	0.00%	0	0.00%
Total	12	100.00%	1,805,009	100.00%
Weighted Principal Repayments Holiday Remaining Term			6.40	



Interest Only (COVID - 19) Remaining Term				
Interest Only (COVID - 19) Remaining Term	Number of Accounts	% Number of Accounts	Outstanding Balance	% of Total Outstanding
0 Months	0	0.00%	0	0.00%
1 Months	0	0.00%	0	0.00%
2 Months	122	49.80%	16,285,792	44.82%
3 Months	123	50.20%	20,049,864	55.18%
4 Months	0	0.00%	0	0.00%
5 Months	0	0.00%	0	0.00%
6 Months	0	0.00%	0	0.00%
More than 6 Months	0	0.00%	0	0.00%
Total	245	100.00%	36,335,655	100.00%

Moratorium (COVID - 19) Remaining Term				
Moratorium (COVID - 19) Remaining Term	Number of Accounts	% Number of Accounts	Outstanding Balance	% of Total Outstanding
0 Months	0	0.00%	0	0.00%
1 Months	1,020	55.98%	172,093,513	55.13%
2 Months	802	44.02%	140,066,887	44.87%
3 Months	0	0.00%	0	0.00%
4 Months	0	0.00%	0	0.00%
5 Months	0	0.00%	0	0.00%
6 Months	0	0.00%	0	0.00%
More than 6 Months	0	0.00%	0	0.00%
Total	1,822	100.00%	312,160,400	100.00%

Occupancy Status				
Occupancy Status	Number of Accounts	% Number of Accounts	Outstanding Balance	% of Total Outstanding
Homeloan	25,224	100.00%	3,964,179,412	100.00%
Total	25,224	100.00%	3,964,179,412.19	100.00%