

Investor Report: Burlington Mortgages No. 1 Designated Activity Company

From:	AIB
Month Ending:	31/07/2021
Interest Payments Date:	20/08/2021

Investor Contacts			
Mark Whelan	Head of AIB Term Funding & Collateral Management	00353 1 641 7164	mark.a.whelan@aib.ie
Jonathan Lynch	Manager, AIB Collateral Management Unit	00353 1 641 7195	jonathan.d.lynch@aib.ie

PCS ID	00109-STs term
ESMA Reference	635400DJAT97IZDCJN35N2020001
Legal Entity Identifier	635400DJAT97IZDCJN35
European Data Warehouse	RMBSIE000145100420208

Deal Participation Information	
Party	Provider
Issuer	Burlington Mortgages No.1 Designated Activity Company
Sellers	EBS d.a.c. & Haven Mortgages Limited
Cash Manager	EBS d.a.c.
Issuer Account Bank	AIB plc
Collection Account Bank	AIB plc
Trustee	BNY Mellon Corporate Trustee Services Limited
Principal Paying Agent & Reference Agent	The Bank of New York Mellon, London Branch
Registrar	The Bank of New York Mellon, Luxembourg Branch
Corporate Services Provider	Intertrust Management Ireland Limited
Back-Up Servicer Facilitator	Intertrust Management Ireland Limited
Subordinated Loan Providers	EBS d.a.c. & Haven Mortgages Limited
Share Trustee	Intertrust Nominees (Ireland) Limited
Arranger	Merrill Lynch International ("BofA Securities")

Details of Notes Issued													
Class of Notes	Reference	Original Moody's Rating	Original DBRS Rating	Current Moody's Rating	Current DBRS Rating	Original Tranche Balance (Euro)	Issue Price	Reference Rate	Margin (up to & including First Optional Redemption Date)	Step-Up Margin (after First Optional Redemption Date)	First Optional Redemption Date	Final Maturity Date	
A1 Notes	XS2131184983	Aaa	AAA	Aaa	AAA	€ 1,731,400,000	100%	1 Month EURIBOR	0.40%	n/a	0.80%	Mar-2025	Nov-2058
A2 Notes	XS2131185014	Aaa	AAA	Aaa	AAA	€ 1,731,400,000	100%	0.35% Fixed	n/a	n/a	0.80%	Mar-2025	Nov-2058
B Notes	XS2131185105	Aa2	AA(lo)	Aa2	AA	€ 201,300,000	100%	1 Month EURIBOR	0.95%	n/a	1.90%	Mar-2025	Nov-2058
C Notes	XS2131185873	A1	A(lo)	A1	A	€ 110,700,000	100%	1 Month EURIBOR	1.35%	n/a	2.35%	Mar-2025	Nov-2058
D Notes	XS2131186848	Baa3	BBB(lo)	Baa3	BBB	€ 110,700,000	100%	1 Month EURIBOR	1.75%	n/a	2.75%	Mar-2025	Nov-2058
E Notes	XS2131189511	B3	BB	B3	BB	€ 80,500,000	100%	1 Month EURIBOR	2.75%	n/a	3.75%	Mar-2025	Nov-2058
Z Notes	XS2131190956	n/a	n/a	n/a	n/a	€ 60,500,000	100%	8.00% Fixed	n/a	n/a	n/a	Mar-2025	Nov-2058
R1A Notes	XS2132421137	n/a	n/a	n/a	n/a	€ 10,000	100%	n/a	n/a	n/a	n/a	Mar-2025	Nov-2058
R1B Notes	XS2132421301	n/a	n/a	n/a	n/a	€ 10,000	100%	n/a	n/a	n/a	n/a	Mar-2025	Nov-2058
R2A Notes	XS2132421483	n/a	n/a	n/a	n/a	€ 10,000	100%	n/a	n/a	n/a	n/a	Mar-2025	Nov-2058
R2B Notes	XS2132421566	n/a	n/a	n/a	n/a	€ 10,000	100%	n/a	n/a	n/a	n/a	Mar-2025	Nov-2058

Deal Information	
Issue Date	16/03/2020
First Distribution Date	20/04/2020
Minimum Denominations (Euro)	100,000
Payments Frequency	Monthly
Interest Calculation	Actual / 360

This Report	
Interest Period Start Date	20/07/2021
Interest Period End Date	20/08/2021
No of days in Interest Period	31
Next Payments Date	20/09/2021

Principal Payments on Notes										
Class of Notes	Reference	Original Balance (Euro)	% of Notes	Opening Balance (Euro)	% of Notes	Amortisation (Euro)	Closing Balance (Euro)	% of Notes	Opening Pool Factor	Closing Pool Factor
A1 Notes	XS2131184983	1,731,400,000	42.9997%	1,143,997,970	33.2641%	(37,714,591)	1,106,283,379	32.5241%	0.66	0.64
A2 Notes	XS2131185014	1,731,400,000	42.9997%	1,731,400,000	50.3440%	0	1,731,400,000	50.9022%	1.00	1.00
B Notes	XS2131185105	201,300,000	4.9993%	201,300,000	5.8532%	0	201,300,000	5.9181%	1.00	1.00
C Notes	XS2131185873	110,700,000	2.7493%	110,700,000	3.2188%	0	110,700,000	3.2545%	1.00	1.00
D Notes	XS2131186848	110,700,000	2.7493%	110,700,000	3.2188%	0	110,700,000	3.2545%	1.00	1.00
E Notes	XS2131189511	80,500,000	1.9992%	80,500,000	2.3407%	0	80,500,000	2.3667%	1.00	1.00
Z Notes	XS2131190956	60,500,000	1.5025%	60,500,000	1.7592%	0	60,500,000	1.7787%	1.00	1.00
R1A Notes	XS2132421137	10,000	0.0002%	10,000	0.0003%	0	10,000	0.0003%	1.00	1.00
R1B Notes	XS2132421301	10,000	0.0002%	10,000	0.0003%	0	10,000	0.0003%	1.00	1.00
R2A Notes	XS2132421483	10,000	0.0002%	10,000	0.0003%	0	10,000	0.0003%	1.00	1.00
R2B Notes	XS2132421566	10,000	0.0002%	10,000	0.0003%	0	10,000	0.0003%	1.00	1.00
Total		4,026,540,000	100%	3,439,137,970	100.0000%	(37,714,591)	3,401,423,379	100.0000%	0.85	0.84

Interest Payments on Notes							
Class of Notes	Reference	Interest Rate	Number of Days	Interest Due (Euro)	Interest Paid (Euro)	Unpaid Interest (Euro)	Cumulative Unpaid (Euro)
A1 Notes	XS2131184983	0.000%	31	-	-	0	0
A2 Notes	XS2131185014	0.350%	31	521,824.72	521,824.72	0	0
B Notes	XS2131185105	0.393%	31	68,123.27	68,123.27	0	0
C Notes	XS2131185873	0.793%	31	75,592.72	75,592.72	0	0
D Notes	XS2131186848	1.193%	31	113,722.72	113,722.72	0	0
E Notes	XS2131189511	2.193%	31	152,017.54	152,017.54	0	0
Z Notes	XS2131190956	8.000%	31	416,777.77	416,777.77	0	0
R1A Notes	XS2132421137	n/a	n/a	n/a	n/a	n/a	n/a
R1B Notes	XS2132421301	n/a	n/a	n/a	n/a	n/a	n/a
R2A Notes	XS2132421483	n/a	n/a	n/a	n/a	n/a	n/a
R2B Notes	XS2132421566	n/a	n/a	n/a	n/a	n/a	n/a
Total				1,348,058.74	1,348,058.74	-	-

General Credit Structure							
Description	Original Balance (Euro)	Opening Balance (Euro)	Drawings in Month (Euro)	Replenished in Month (Euro)	Closing Balance (Euro)	Balance Required (Euro)	Deficit (Euro)
General Reserve Fund	3,774,000	3,774,000	-	-	3,774,000	3,774,000	-
Liquidity Reserve Fund	25,971,000	21,565,485	(282,859)	-	21,282,625	21,282,625	-
Total	29,745,000	25,339,485	(282,859)	-	25,056,625	25,056,625	-

Revenue Analysis	
	Euro
Revenue Receipts	8,403,057
Interest from Bank Accounts	0
Class A Liquidity Reserve Fund Excess Amount	282,859
Class A Redemption Date, Class A Liquidity Reserve Amount	0
General Reserve Fund Excess Amount	0
Other Net Income, excluding Principal Receipts	0
Principal Deficiency Excess Revenue Amounts	0
less:	
Payments to the Sellers	0
Tax Payments, excluding amounts due on the Issuer Profit Ledger	0
Available Revenue Receipts	8,685,916
Allocation of Available Revenue Receipts	
Trustee	0
Amounts due to the Reference Agent, the Registrar, the paying Agent, the Cash Manager,	(1,458)
the Back-Up Servicer Facilitator, the Corporate Services Provider, the Issuer Account Bank	(33,712)
any amounts payable by the Issuer to third parties	(3,785)
Servicer (EBS)	(308,514)
Servicer (Haven)	(166,518)
Issuer Profit Fee	(100)
Class A Notes Interest	(521,825)
Class A Liquidity Reserve Fund Required Amount	0
Class A Principal Deficiency Sub-Ledger	0
Class B Notes Interest	(68,123)
Class B Principal Deficiency Sub-Ledger	0
Class C Notes Interest	(75,593)
Class C Principal Deficiency Sub-Ledger	0
Class D Notes Interest	(113,723)
Class D Principal Deficiency Sub-Ledger	0
Class E Notes Interest	(152,018)
Class E Principal Deficiency Sub-Ledger	0
General Reserve Fund Required Amount	0
Class Z Principal Deficiency Sub-Ledger	41,118
Class Z Notes Interest	(416,778)
On or after the First Optional Redemption Date or the Early Redemption Date, amounts to redeem the Rated Notes	0
Subordinated Loan Interest (EBS)	0
Subordinated Loan Interest (Haven)	0
Subordinated Loan Principal (EBS)	0
Subordinated Loan Principal (Haven)	0
Amounts to be credited to the Deposit Account to be applied on the next Interest Payment Date as Available Revenue Receipts	0
Class R1A Payment	(4,452,224)
Class R1B Payment	(2,412,665)
Class R1 Principal Payment	0
Class R2A Payment	0
Class R2B Payment	0
Reconciliation	0

Principal Deficiency Ledger							
Class of Notes	Reference	Opening Balance (Euro)	Increase in Losses (Euro)	Decrease in Losses (Euro)	Net Losses (Euro)	Allocation of Revenue Receipts	Closing Balance (Euro)
A1 Notes	XS2131184983	0	0	0	0	0	0
A2 Notes	XS2131185014	0	0	0	0	0	0
B Notes	XS2131185105	0	0	0	0	0	0
C Notes	XS2131185873	0	0	0	0	0	0
D Notes	XS2131186848	0	0	0	0	0	0
E Notes	XS2131189511	0	0	0	0	0	0
Z Notes	XS2131190956	-	58,231	(99,349)	(41,118)	(41,118)	-

Principal Deficiency Ledger					
Class of Notes	Reference	Cumulative Increase in Losses (Euro)	Cumulative Decrease in Losses (Euro)	Cumulative Net Losses (Euro)	Cumulative Allocation of Revenue Receipts
A1 Notes	XS2131184983	0	0		0
A2 Notes	XS2131185014	0	0		0
B Notes	XS2131185105	0	0		0
C Notes	XS2131185873	0	0		0
D Notes	XS2131186848	0	0		0
E Notes	XS2131189511	0	0		0
Z Notes	XS2131190956	1,825,733	(1,000,894)	824,839	824,839

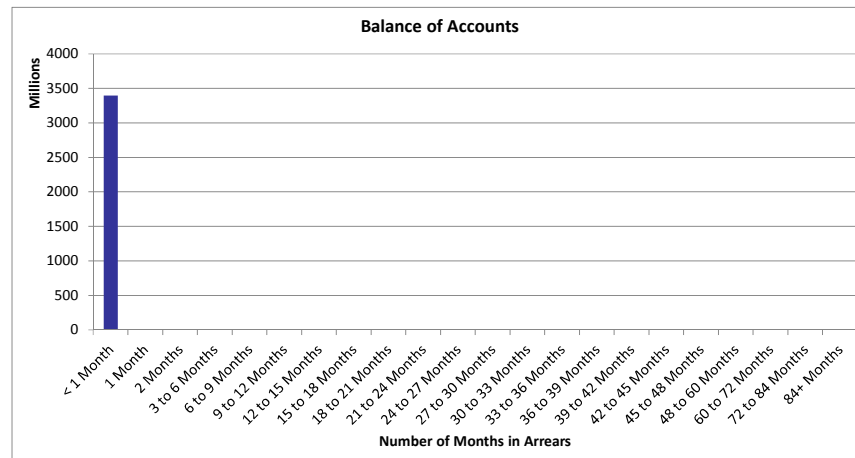
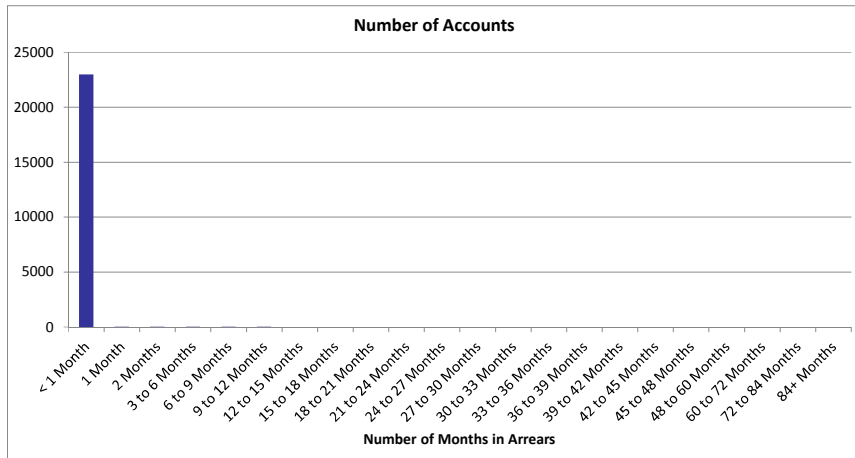
Principal Analysis		Euro
Principal Receipts		37,755,709
Proceeds of issue of the Class R1 Notes and the Class R2 Note		0
Any credit to the Principal Deficiency Ledgers		(41,118)
Any other Available Principal receipts		0
The excess of the proceeds of the Collateralised Notes over the Consideration		0
Optional Purchase Price upon sale of the Portfolio further to exercise of the Call Option		0
less:		
Available Principal Receipts applied as Principal Deficiency Excess Revenue Amounts		0
Available Principal		37,714,591
Allocation of Available Principle		
Principal Addition Amounts to be applied to meet any Senior Expenses Deficit;		0
Pro rata and pari passu to the principal amounts due on the Class A1 Notes;		(37,714,591)
Pro rata and pari passu to the principal amounts due on the Class A2 Notes;		0
Pro rata and pari passu to the principal amounts due on the Class B Notes;		0
Pro rata and pari passu to the principal amounts due on the Class C Notes;		0
Pro rata and pari passu to the principal amounts due on the Class D Notes;		0
Pro rata and pari passu to the principal amounts due on the Class E Notes;		0
Pro rata and pari passu to the principal amounts due on the Class Z Notes;		0
Principal amount due on the Class R2 Notes		0
All remaining amounts to be applied as Available Revenue Receipts		0
Reconciliation		0

Mortgage Portfolio Analysis: Properties Under Management					
	This Period		Cumulative (Active Loans only)		Cumulative Active and Redeemed Loans
Description	No of Properties	Principal Balance Amount	No of Properties	Principal Balance Amount	Number of Properties
Abandoned	0	0.00	0	0.00	0
Property in Possession	0	0.00	0	0.00	0
Sold	0	0.00	0	0.00	0

Mortgage Portfolio Analysis		
	This Period (Euro)	Cumulative (Euro)
Opening Mortgage Principle Balance	3,447,809,022	4,026,483,467
Scheduled Principal Payments and Early Redemptions	37,755,709	624,235,249
Charge Offs	0	0
Non-cash movements	0	(8,521,962)
Mortgages Repurchased by Sellers	0	716,867
Closing Mortgage Principal Balance	3,410,053,313	3,410,053,313

Stratification Tables

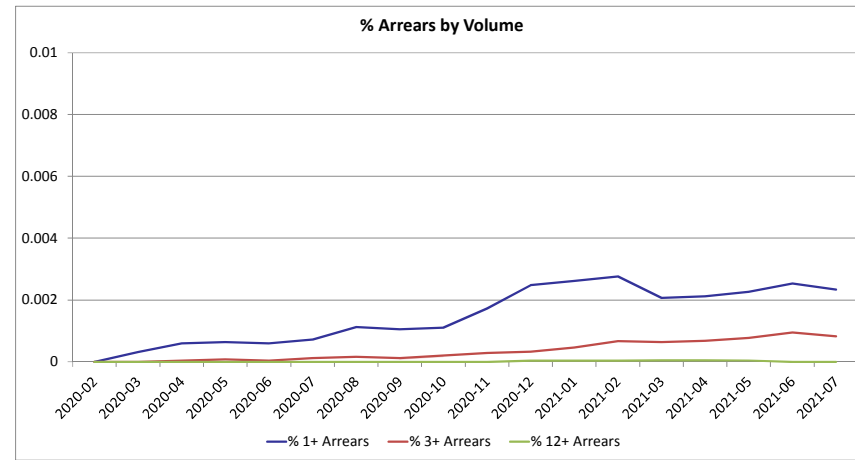
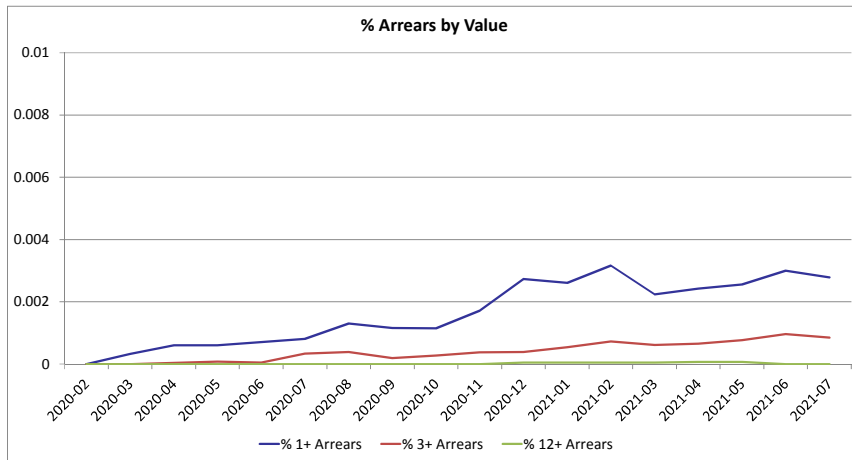
Number of Repayments in Arrears				
Number of Months In Arrears	Number of Accounts	% Number of Accounts	Outstanding Balance	% of Total Outstanding Balance
< 1 Month	23,007	99.77%	3,400,548,060	99.72%
1 Month	26	0.11%	5,303,661	0.16%
2 Months	9	0.04%	1,302,716	0.04%
3 to 6 Months	10	0.04%	1,571,813	0.05%
6 to 9 Months	6	0.03%	681,833	0.02%
9 to 12 Months	3	0.01%	645,230	0.02%
12 to 15 Months	0	0.00%	0	0.00%
15 to 18 Months	0	0.00%	0	0.00%
18 to 21 Months	0	0.00%	0	0.00%
21 to 24 Months	0	0.00%	0	0.00%
24 to 27 Months	0	0.00%	0	0.00%
27 to 30 Months	0	0.00%	0	0.00%
30 to 33 Months	0	0.00%	0	0.00%
33 to 36 Months	0	0.00%	0	0.00%
36 to 39 Months	0	0.00%	0	0.00%
39 to 42 Months	0	0.00%	0	0.00%
42 to 45 Months	0	0.00%	0	0.00%
45 to 48 Months	0	0.00%	0	0.00%
48 to 60 Months	0	0.00%	0	0.00%
60 to 72 Months	0	0.00%	0	0.00%
72 to 84 Months	0	0.00%	0	0.00%
84+ Months	0	0.00%	0	0.00%
Total	23,061	100.00%	3,410,053,313	100.00%



Repayments in Arrears - Last 6 Months						
Months in Arrears Value of Accounts (€m)	Feb-21	Mar-21	Apr-21	May-21	Jun-21	Jul-21
12+ Arrears	0.16	0.16	0.23	0.23	0.00	0.00
3+ Arrears**	2.60	2.19	2.31	2.67	3.32	2.90
1+ Arrears*	11.39	7.95	8.54	8.92	10.34	9.51
Total Arrears	11.39	7.95	8.54	8.92	10.34	9.51
Total Portfolio	3,598.85	3,555.43	3,520.66	3,487.67	3,447.81	3,410.05
Months in Arrears Number of Accounts	Feb-21	Mar-21	Apr-21	May-21	Jun-21	Jul-21
12+ Arrears	1	1	1	1	0	0
3+ Arrears**	16	15	16	18	22	19
1+ Arrears*	66	49	50	53	59	54
Total Arrears	66	49	50	53	59	54
Total Portfolio	23,896	23,692	23,539	23,400	23,241	23,061

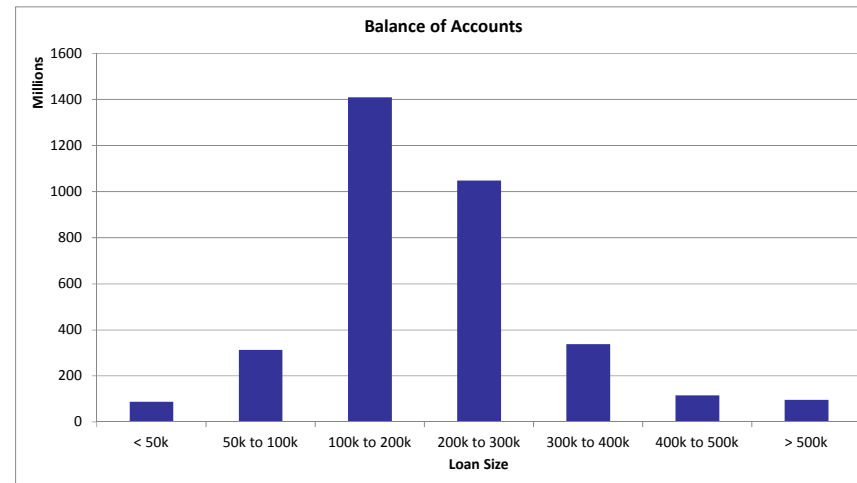
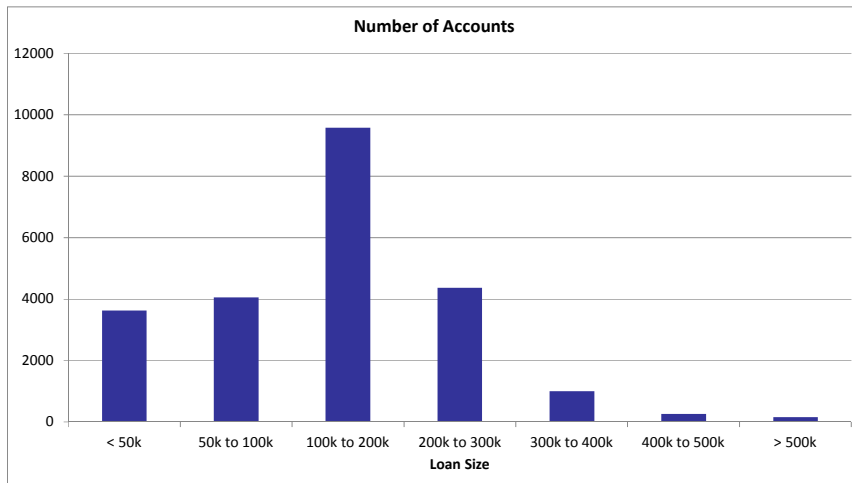
* 1+ Arrears includes loans in 3+ and 12+ Arrears

** 3+ Arrears includes loans in 12+ Arrears

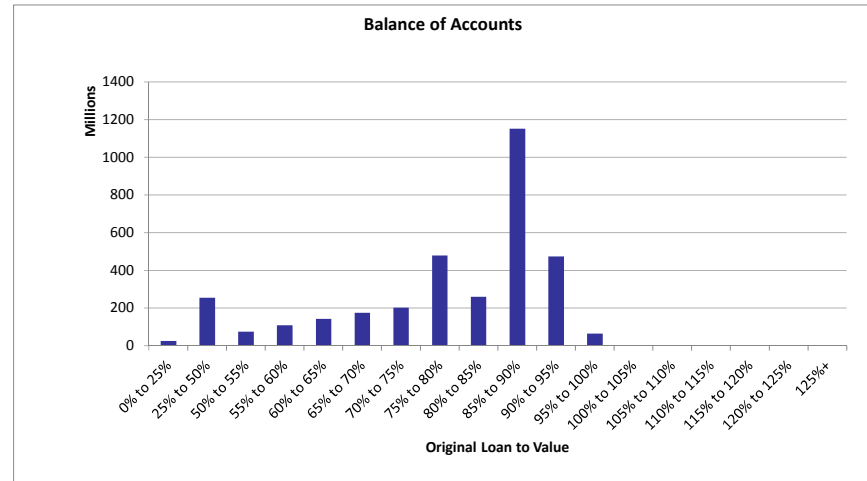
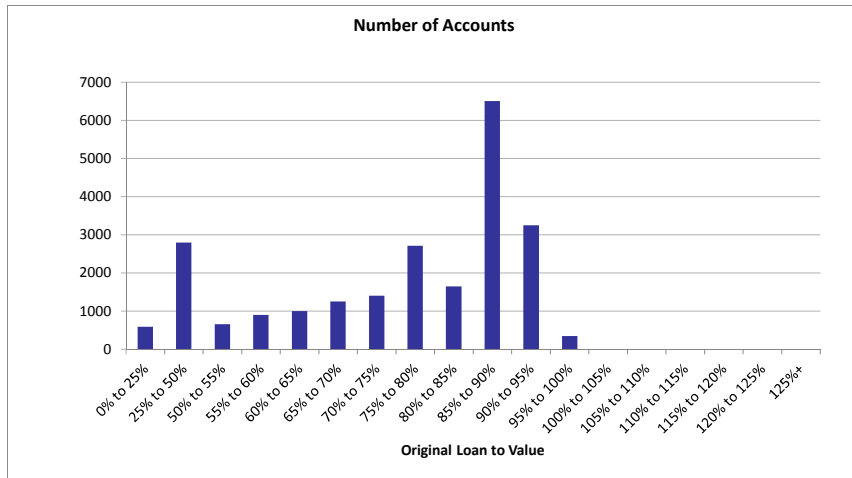


Cure Rates - Last 6 Months						
	Feb-21	Mar-21	Apr-21	May-21	Jun-21	Jul-21
Total Cases Any Arrears	105	80	79	81	87	94
Total Cured to 0 Arrears	37	49	19	14	20	20
% Cure Rate to 0 Arrears	35.24%	61.25%	24.05%	17.28%	22.99%	21.28%

Loan Size				
Loan Size	Number of Accounts	% Number of Accounts	Outstanding Balance	% of Total Outstanding Balance
< 50k	3,632	15.75%	87,355,096	2.56%
50k to 100k	4,055	17.58%	312,832,549	9.17%
100k to 200k	9,581	41.55%	1,410,690,787	41.37%
200k to 300k	4,373	18.96%	1,048,309,792	30.74%
300k to 400k	1,000	4.34%	338,847,819	9.94%
400k to 500k	265	1.15%	116,319,933	3.41%
> 500k	155	0.67%	95,697,336	2.81%
Total	23,061	100.00%	3,410,053,313	100.00%
Weighted Average Loan Size			147,871.01	

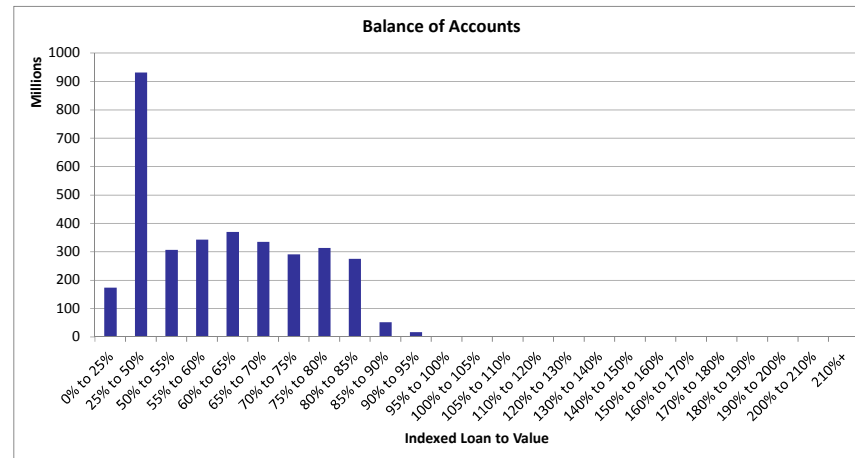
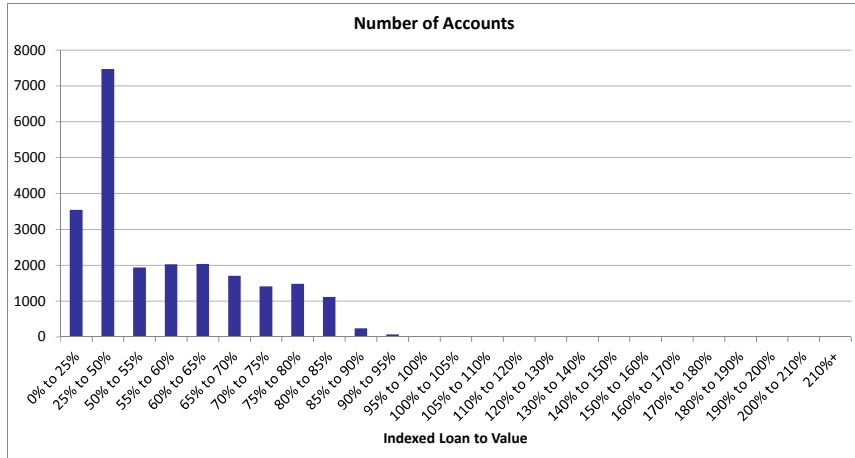


Original LTV				
Original LTV	Number of Accounts	% Number of Accounts	Outstanding Balance	% of Total Outstanding Balance
0% to 25%	586	2.54%	24,616,333	0.72%
25% to 50%	2,801	12.15%	254,367,176	7.46%
50% to 55%	657	2.85%	74,407,373	2.18%
55% to 60%	897	3.89%	108,317,354	3.18%
60% to 65%	1,003	4.35%	142,211,596	4.17%
65% to 70%	1,252	5.43%	174,368,709	5.11%
70% to 75%	1,403	6.08%	201,664,513	5.91%
75% to 80%	2,713	11.76%	478,891,422	14.04%
80% to 85%	1,651	7.16%	259,263,800	7.60%
85% to 90%	6,505	28.21%	1,152,370,115	33.79%
90% to 95%	3,249	14.09%	474,581,723	13.92%
95% to 100%	344	1.49%	64,993,199	1.91%
100% to 105%	0	0.00%	0	0.00%
Total	23,061	100.00%	3,410,053,313	100.00%
Weighted Average Original LTV			78.81%	



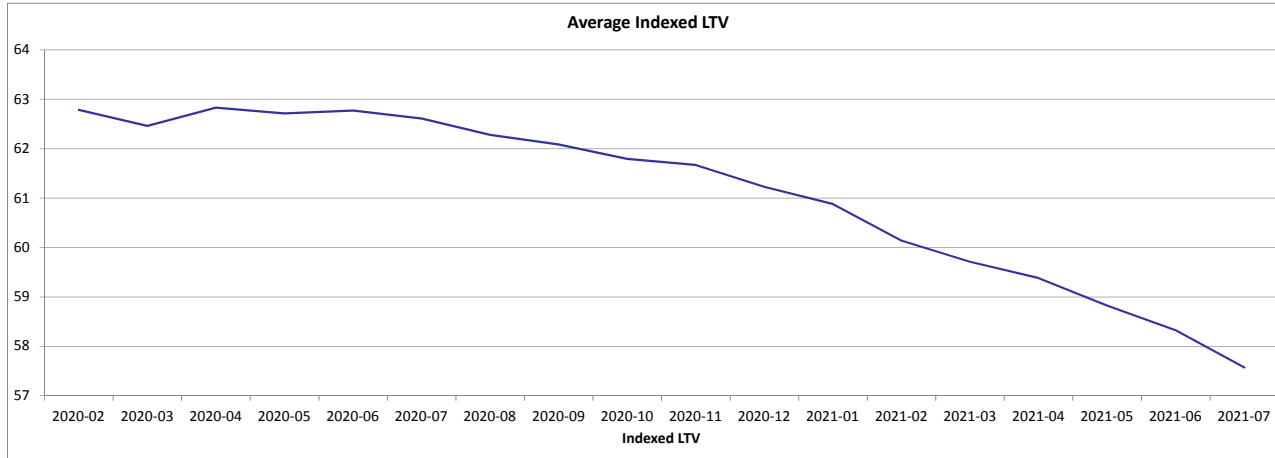
*OLTV for top-up loans is calculated by combining the original loan amount and the top-up loan amount. This does not take into account any reduction in the original loan amount that occurred prior to the top-up approval. The OLTV on top-up loans is therefore shown here as higher than the true exposure at the time the top-up was approved. The true exposure on all loans, including top-ups, was 100% or less at loan approval.

Indexed LTV				
Indexed LTV	Number of Accounts	% Number of Accounts	Outstanding Balance	% of Total Outstanding Balance
0% to 25%	3,542	15.36%	173,328,225	5.08%
25% to 50%	7,479	32.43%	931,461,769	27.32%
50% to 55%	1,938	8.40%	307,115,852	9.01%
55% to 60%	2,031	8.81%	342,741,081	10.05%
60% to 65%	2,039	8.84%	369,859,645	10.85%
65% to 70%	1,701	7.38%	335,168,797	9.83%
70% to 75%	1,412	6.12%	291,450,902	8.55%
75% to 80%	1,482	6.43%	313,597,688	9.20%
80% to 85%	1,116	4.84%	275,604,757	8.08%
85% to 90%	243	1.05%	51,943,751	1.52%
90% to 95%	75	0.33%	17,222,693	0.51%
95% to 100%	3	0.01%	558,153	0.02%
Total	23,061	100.00%	3,410,053,313	100.00%
Weighted Average Indexed LTV			57.57%	

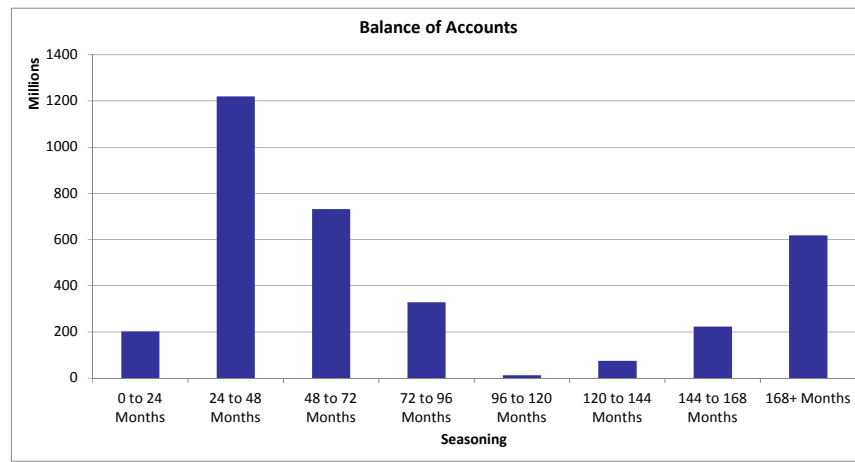
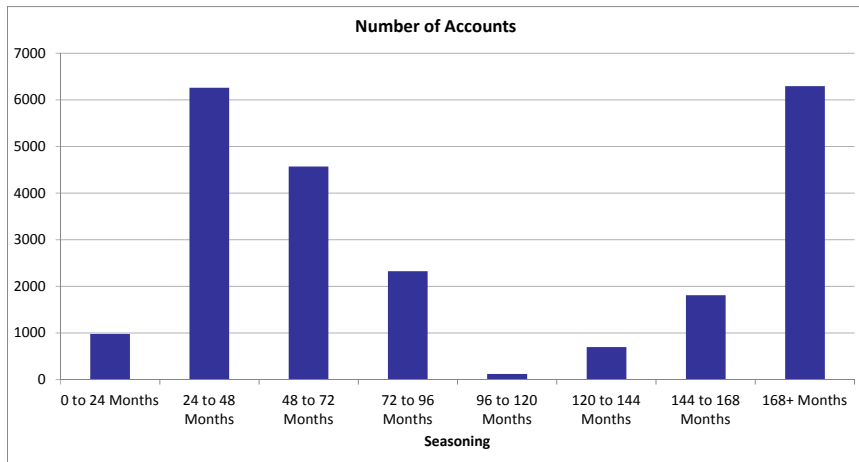


Average Indexed LTV - Last 6 Months

	Feb-21	Mar-21	Apr-21	May-21	Jun-21	Jul-21
Indexed LTV	60.14	59.71	59.38	58.82	58.33	57.57

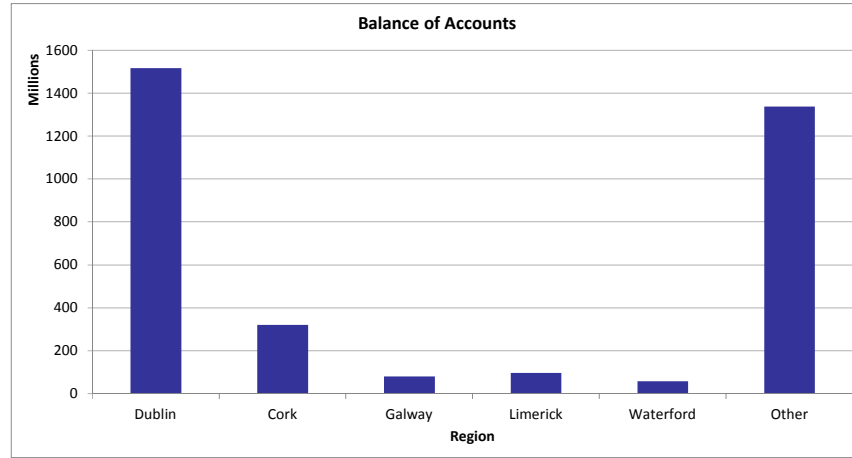
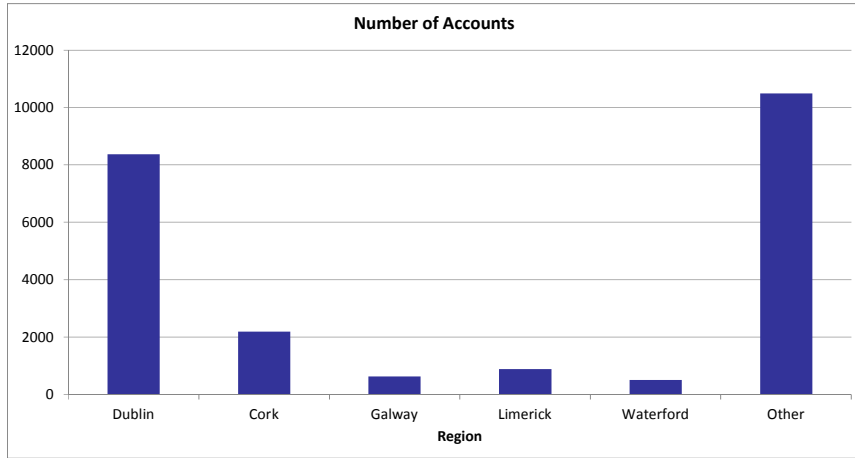


Seasoning				
Seasoning	Number of Accounts	% Number of Accounts	Outstanding Balance	% of Total Outstanding Balance
0 to 24 Months	981	4.25%	201,822,183	5.92%
24 to 48 Months	6,262	27.15%	1,220,258,673	35.78%
48 to 72 Months	4,570	19.82%	731,767,745	21.46%
72 to 96 Months	2,324	10.08%	328,757,799	9.64%
96 to 120 Months	119	0.52%	11,563,223	0.34%
120 to 144 Months	700	3.04%	74,619,698	2.19%
144 to 168 Months	1,814	7.87%	223,236,691	6.55%
168+ Months	6,291	27.28%	618,027,300	18.12%
Total	23,061	100.00%	3,410,053,313	100.00%
Weighted Average Seasoning			82.03	

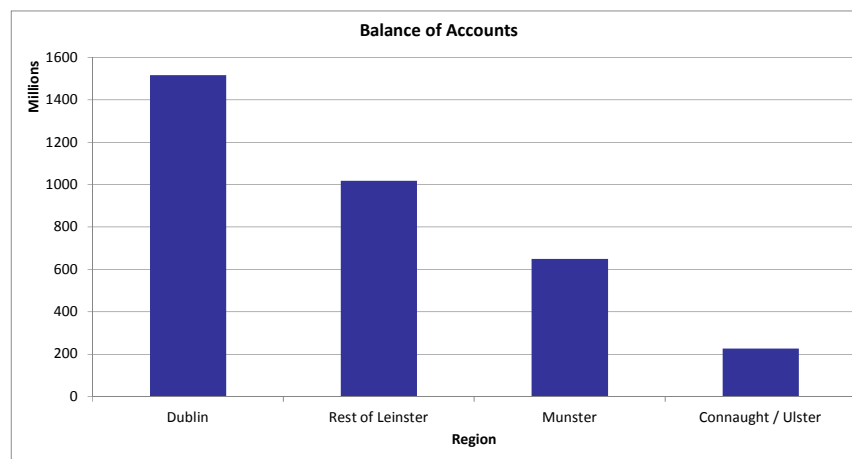
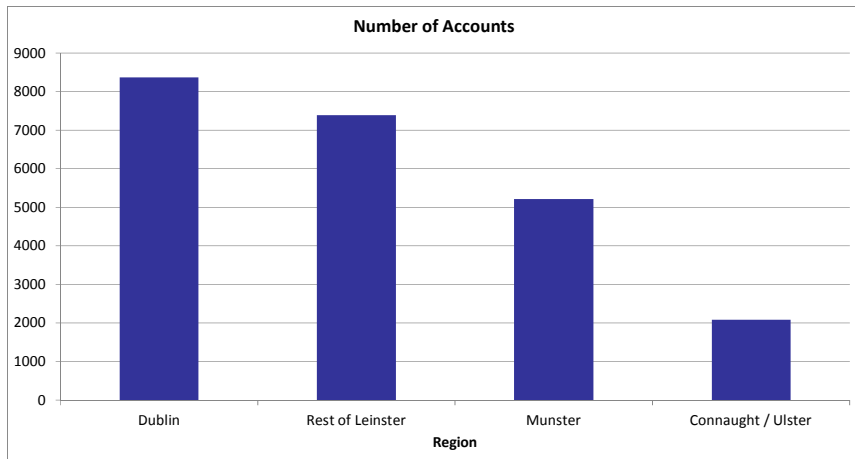


<i>Property Area (County)</i>				
County	Number of Accounts	% Number of Accounts	Outstanding Balance	% of Total Outstanding Balance
CARLOW	300	1.30%	33,590,455	0.99%
CAVAN	186	0.81%	20,674,362	0.61%
CLARE	566	2.45%	57,982,548	1.70%
CORK	2,186	9.48%	320,331,345	9.39%
DONEGAL	443	1.92%	37,907,122	1.11%
DUBLIN	8,373	36.31%	1,516,926,364	44.48%
GALWAY	630	2.73%	80,723,292	2.37%
KERRY	543	2.35%	58,082,405	1.70%
KILDARE	1,668	7.23%	260,041,693	7.63%
KILKENNY	309	1.34%	36,522,931	1.07%
LAOIS	366	1.59%	43,914,788	1.29%
LEITRIM	69	0.30%	6,636,431	0.19%
LIMERICK	883	3.83%	96,111,932	2.82%
LONGFORD	84	0.36%	7,494,998	0.22%
LOUTH	963	4.18%	116,845,957	3.43%
MAYO	282	1.22%	28,228,400	0.83%
MEATH	1,721	7.46%	247,643,380	7.26%
MONAGHAN	108	0.47%	12,559,123	0.37%
OFFALY	221	0.96%	24,560,859	0.72%
ROSCOMMON	129	0.56%	14,358,722	0.42%
SLIGO	235	1.02%	24,855,894	0.73%
TIPPERARY	535	2.32%	58,284,654	1.71%
WATERFORD	501	2.17%	58,370,267	1.71%
WESTMEATH	344	1.49%	39,953,704	1.17%
WEXFORD	473	2.05%	57,208,690	1.68%
WICKLOW	943	4.09%	150,242,996	4.41%
Total	23,061	100.00%	3,410,053,313	100.00%

<i>Property Area (County)</i>				
Major County	Number of Accounts	% Number of Accounts	Outstanding Balance	% of Total Outstanding Balance
Dublin	8,373	36.31%	1,516,926,364	44.48%
Cork	2,186	9.48%	320,331,345	9.39%
Galway	630	2.73%	80,723,292	2.37%
Limerick	883	3.83%	96,111,932	2.82%
Waterford	501	2.17%	58,370,267	1.71%
Other	10,488	45.48%	1,337,590,113	39.22%
Total	23,061	100.00%	3,410,053,313	100.00%

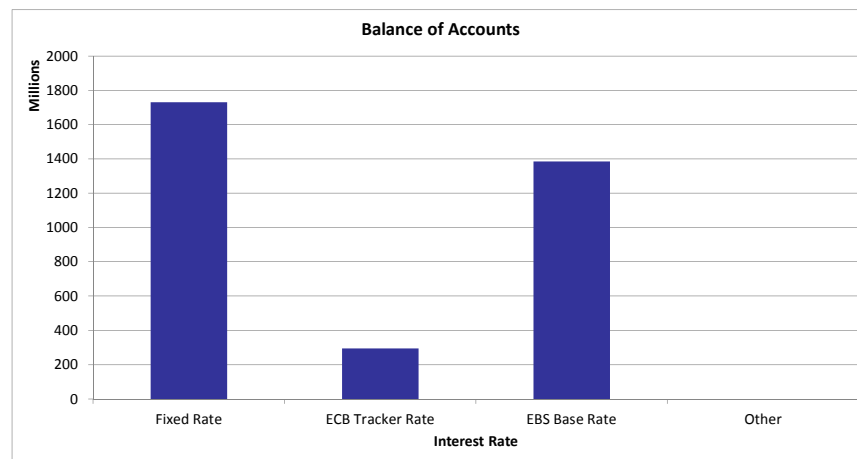
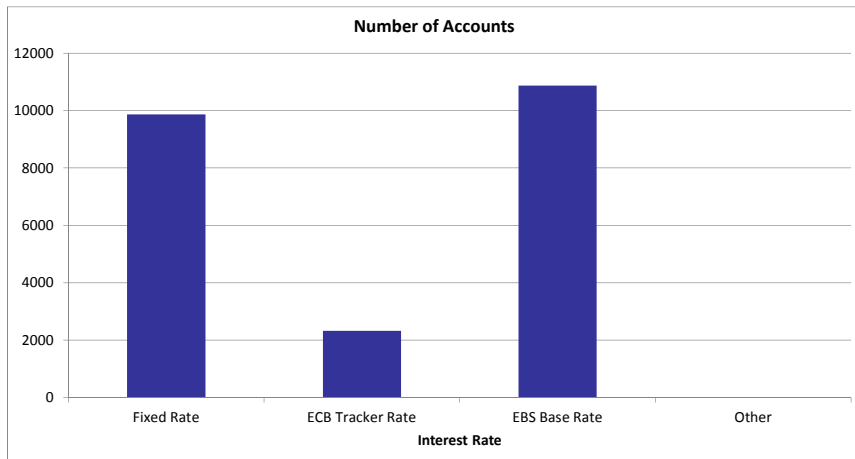


Property Area (Region)				
Region	Number of Accounts	% Number of Accounts	Outstanding Balance	% of Total Outstanding Balance
Dublin	8,373	36.31%	1,516,926,364	44.48%
Rest of Leinster	7,392	32.05%	1,018,020,452	29.85%
Munster	5,214	22.61%	649,163,151	19.04%
Connaught / Ulster	2,082	9.03%	225,943,346	6.63%
Total	23,061	100.00%	3,410,053,313	100.00%

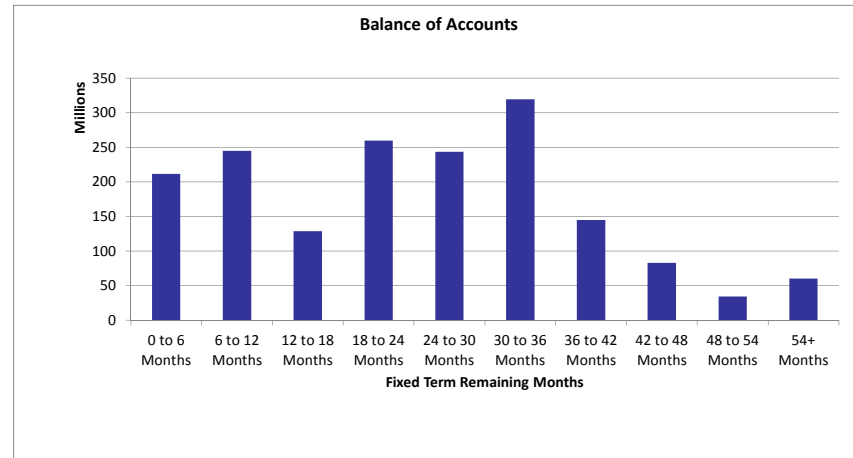
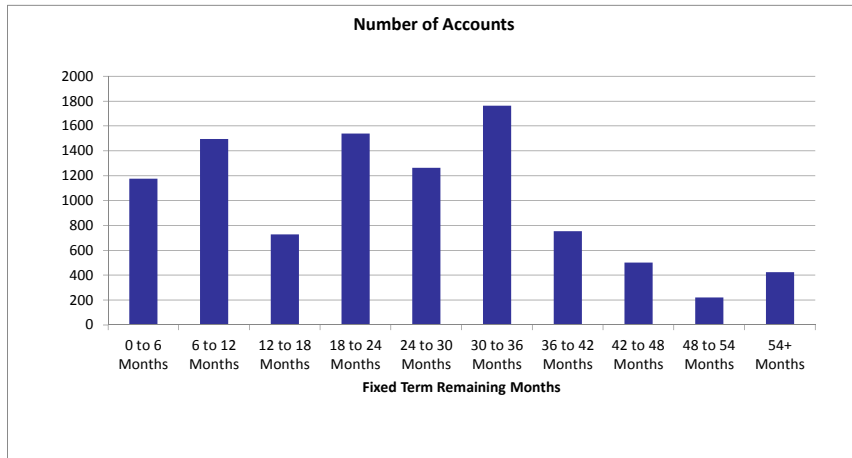


Interest Rate				
Interest Rate Type	Number of Accounts	% Number of Accounts	Outstanding Balance	% of Total Outstanding Balance
Fixed Rate	9,868	42.79%	1,730,225,299	50.74%
ECB Tracker Rate	2,322	10.07%	294,732,021	8.64%
EBS Base Rate	10,871	47.14%	1,385,095,993	40.62%
Other	0	0.00%	0	0.00%
Total	23,061	100.00%	3,410,053,313	100.00%

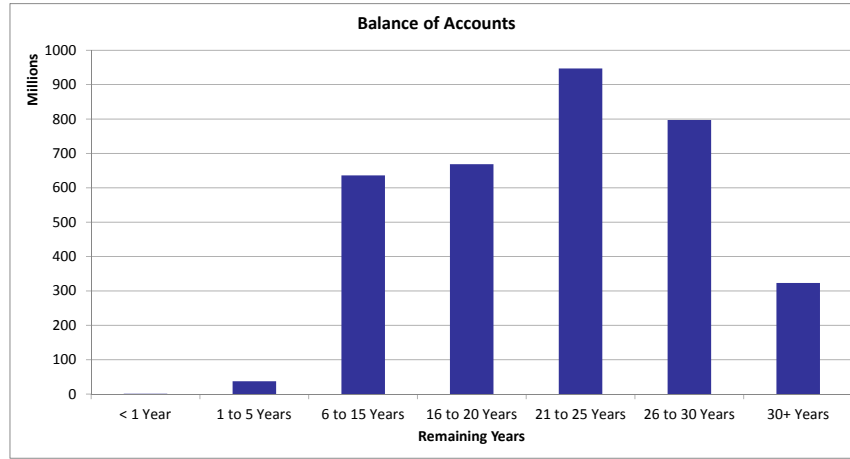
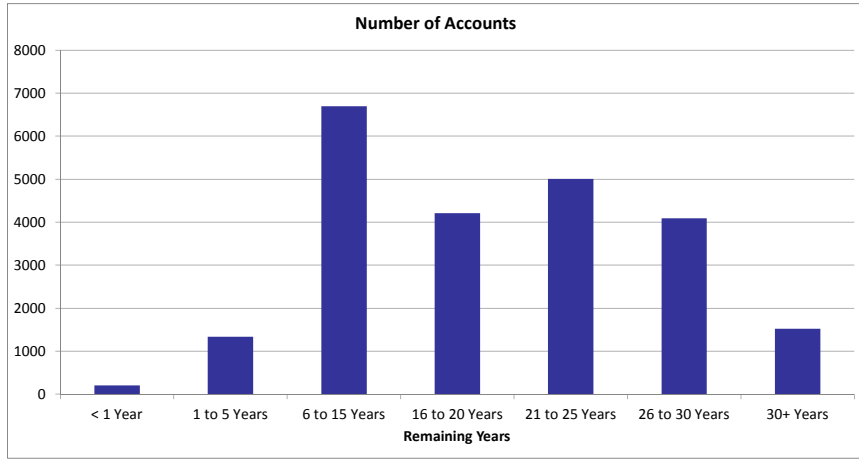
Interest Rate Type	Number of Accounts	Avg Interest Rate %
Fixed Rate	9,868	2.95
ECB Tracker Rate	2,322	1.19
EBS Base Rate	10,871	3.38
Other	0	0.00
Weighted Average Interest Rate		2.94



Fixed Term Remaining Months				
Fixed Term Remaining Months	Number of Accounts	% Number of Accounts	Outstanding Balance	% of Total Outstanding Balance
0 to 6 Months	1,177	11.93%	211,722,929	12.24%
6 to 12 Months	1,496	15.16%	244,923,664	14.16%
12 to 18 Months	727	7.37%	128,709,616	7.44%
18 to 24 Months	1,538	15.59%	259,680,869	15.01%
24 to 30 Months	1,264	12.81%	243,435,769	14.07%
30 to 36 Months	1,763	17.87%	319,319,862	18.46%
36 to 42 Months	755	7.65%	144,932,060	8.38%
42 to 48 Months	502	5.09%	82,938,324	4.79%
48 to 54 Months	222	2.25%	34,254,230	1.98%
54+ Months	424	4.30%	60,307,977	3.49%
Total	9,868	100.00%	1,730,225,299	100.00%
Weighted Fixed Term Remaining Months			24.66	

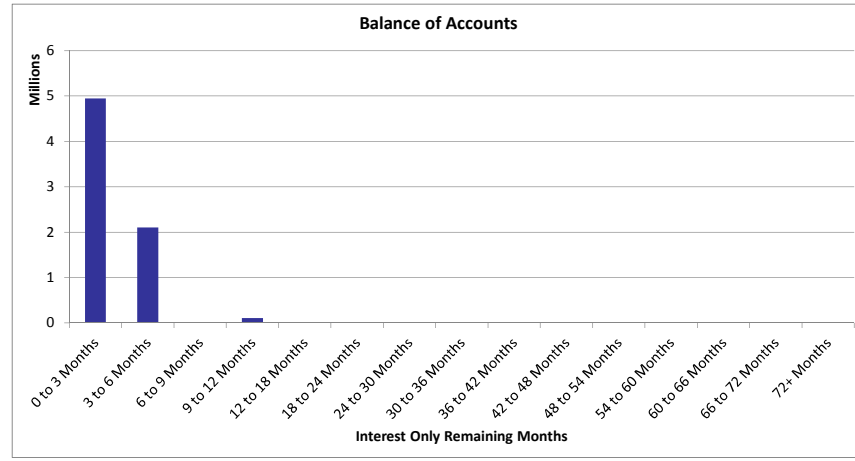
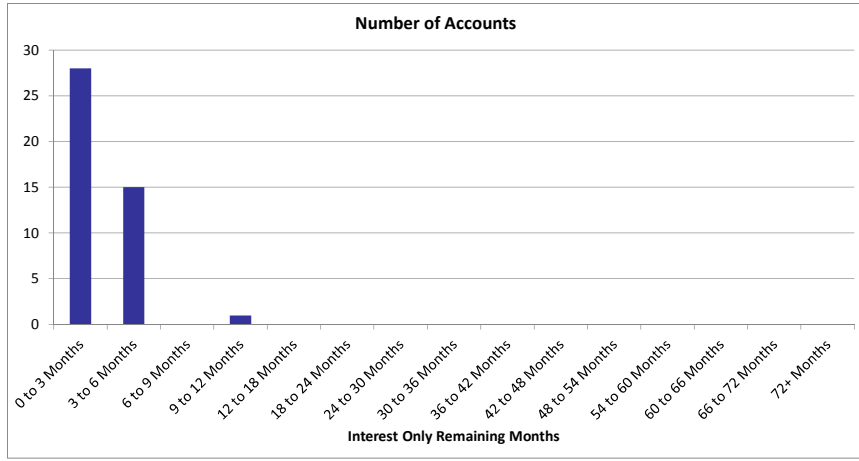


Remaining Years				
Remaining Years	Number of Accounts	% Number of Accounts	Outstanding Balance	% of Total Outstanding Balance
< 1 Year	201	0.87%	1,071,596	0.03%
1 to 5 Years	1,338	5.80%	37,930,287	1.11%
6 to 15 Years	6,694	29.03%	635,622,676	18.64%
16 to 20 Years	4,212	18.26%	668,793,864	19.61%
21 to 25 Years	5,002	21.69%	946,851,424	27.77%
26 to 30 Years	4,090	17.74%	796,777,515	23.37%
30+ Years	1,524	6.61%	323,005,952	9.47%
Total	23,061	100.00%	3,410,053,313	100.00%
Weighted Average Remaining Years			21.41	



Repayments Status				
Principal Repayments Status	Number of Accounts	% Number of Accounts	Outstanding Balance	% of Total Outstanding Balance
Principal and Interest	23,017	99.81%	3,402,898,087	99.79%
Interest Only (Standard)	44	0.19%	7,155,226	0.21%
Interest Only (COVID - 19)	0	0.00%	0	0.00%
Moratorium (COVID - 19)	0	0.00%	0	0.00%
Total	23,061	100.00%	3,410,053,313	100.00%

Interest Only (Standard) Remaining Term				
Interest Only (Standard) Remaining Term	Number of Accounts	% Number of Accounts	Outstanding Balance	% of Total Outstanding Balance
0 to 3 Months	28	63.64%	4,948,023	69.15%
3 to 6 Months	15	34.09%	2,099,383	29.34%
6 to 9 Months	0	0.00%	0	0.00%
9 to 12 Months	1	2.27%	107,821	1.51%
12 to 18 Months	0	0.00%	0	0.00%
18 to 24 Months	0	0.00%	0	0.00%
24 to 30 Months	0	0.00%	0	0.00%
48 to 54 Months	0	0.00%	0	0.00%
54 to 60 Months	0	0.00%	0	0.00%
60 to 66 Months	0	0.00%	0	0.00%
66 to 72 Months	0	0.00%	0	0.00%
72+ Months	0	0.00%	0	0.00%
Total	44	100.00%	7,155,226	100.00%
Weighted Average Interest Only (Standard) Remaining Term			2.16	



Occupancy Status				
Occupancy Status	Number of Accounts	% Number of Accounts	Outstanding Balance	% of Total Outstanding Balance
HOMELoAN	23,057	99.98%	3,409,490,494	99.98%
RETAIL BTL	4	0.02%	562,819	0.02%
Total	23,061	100.00%	3,410,053,313	100.00%